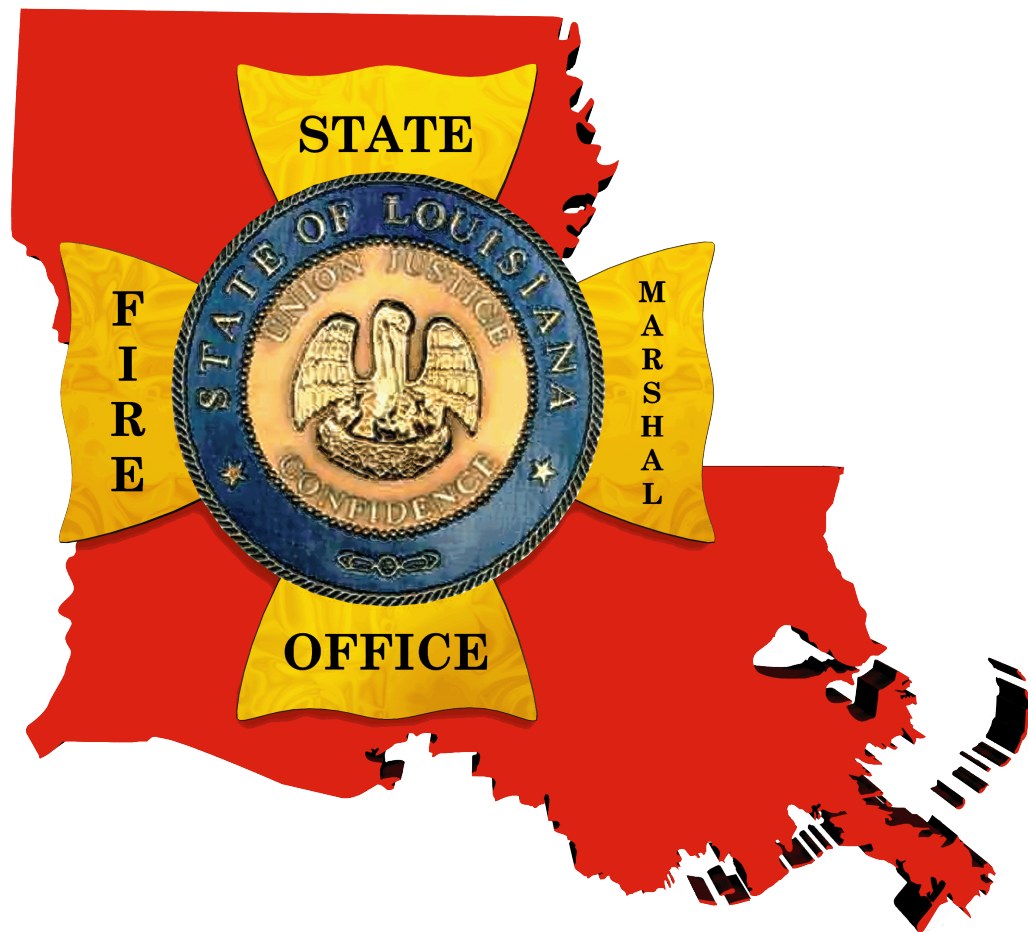


# Louisiana State Fire Marshal's Office

2009 Annual Report



*“Commitment... Service... Protection...”*

For Calendar Year 2009

This public document was published at a cost of \$2.04 per copy. This document was published by the Office of the State Fire Marshal to inform State Government and the general public of the agency's activities for the 2007-2008 calendar year.

This material was printed in accordance with standards for printing by state agencies established pursuant to R.S. 43:31



# 2009 Annual Report

2009 Annual Report

December 23, 2009

## Letter from the State Fire Marshal

### Special Points of Interest:

- 2009 Fire Statistics
- Fire Department Incident Reporting Roster
- Fire Marshal Section Reports
- Fallen Firefighters Memorial

### Inside this issue:

Fire Statistics	4
LFIRS Brief	10
Fire Department Incident Reporting Roster	12
Section Reports	23
Plan Review	24
Inspections	26
Investigations/Arson	27
Licensing	28
Health Care	29
Mechanical Safety	30
What's New	31
Fire Fighters Insurance	33
Contact Information	33

Friends,

It is with great pride that we in your State Fire Marshal's Office share the activities of the state wide fire and emergency services for 2009. The contributions of the dedicated men and woman on the Louisiana fire service are unmatched. Lives and property are saved everyday as the result of fire prevention and fire suppression activities. We should never forget the task at hand is to build a safer state while enhancing fire protection capabilities to every community.

I must take a moment to highlight some of our enhancements in the OSFM. Our consolidated plan review process has become even more effective and useful as we have decentralized our staff to be within reach to all areas of the state. Our enforcement personnel are undergoing cross training to eliminate duplications and to empower each uniformed member to perform multi-disciplinary duties. The fire service is better represented within the OSFM; we now lead ESF-4 for local fire departments and have partnered with the LA Fire Chiefs Association to manage the states fire asset tracking. The state's Urban Search and Rescue concept has been placed in the OSFM and we have successfully grown three core teams and are currently developing regional collapse teams. Local fire departments are rising to the challenge to provide this extraordinary service. I am very proud of the personnel of this office for their attitude, unity and great works to interface with local agencies to provide assistance and professional services.

We are enhancing our Louisiana Fire Incident Reporting System (LFIRS), to better document the activities of the fire service and also illustrate the fire problem in Louisiana. We need every department to report their response efforts in a timely fashion to this office so that we can track trends and develop loss control measure as well as benefit from grant assistance opportunities. Specifically, we know we rank in the top 5 in the country for residential fire deaths. Every home must have working smoke alarms and Louisiana needs to embrace the acceptance of home fire sprinkler systems.

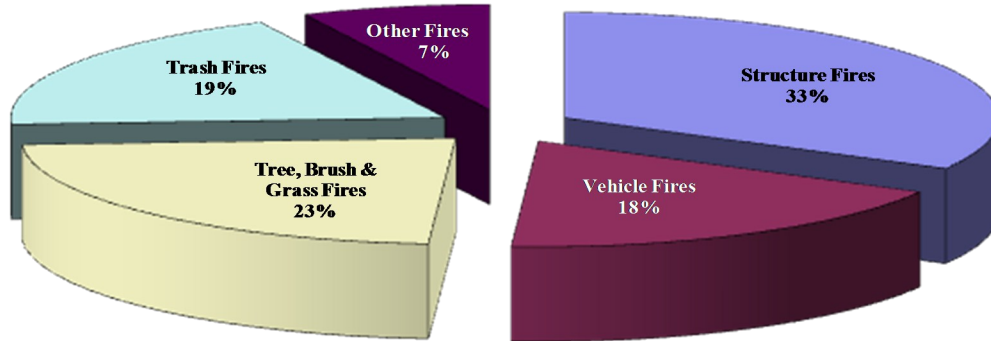
Clearly, we want the professionals of design, construction, fire protection, government leaders and business to find our office to be their friend and partner in progress. We are approachable, accessible and we build consensus to safety and progress in Louisiana. Never hesitate to call on us. We are your friend. Thank you all for what you do. You are all protectors of others.

Yours in Protection,

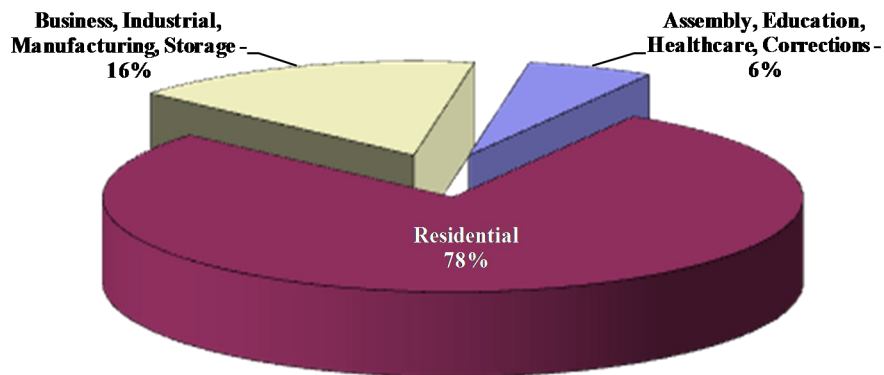
H. "Butch" Browning  
State Fire Marshal

# 2009 Louisiana Fire Statistics

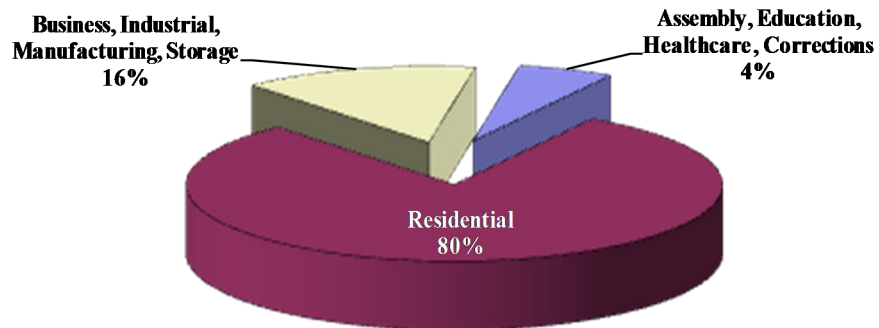
### Fires by Type



### Structure Fires by Property Use



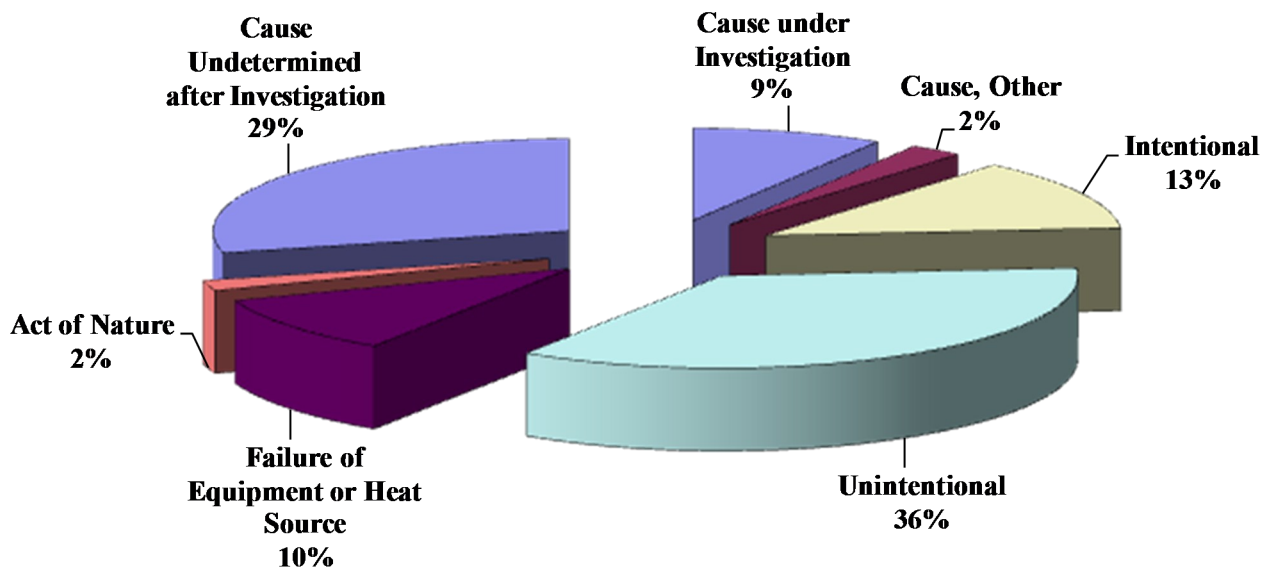
### Structure Fire Dollar Loss by Property Use



## 2009 Louisiana Fire Statistics

Leading Causes of Fire	# of Fires	Fire Dollar Loss
Heat from Powered Equipment	755	\$8,224,787
Arching (electricity)	745	\$8,692,653
Radiated, Conducted Heat from Operating Equipment	563	\$4,185,704
Hot or Smoldering Object	447	\$3,687,250
Heat from Other Open Flames or Smoking Materials	400	\$6,968,599
Heat Spread or Radiated Heat from Another Fire	390	\$3,548,747
Match	366	\$1,432,856
Spark, Ember or Flame from Operating Equipment	327	\$5,617,895
Hot Ember or Ash	307	\$1,224,950
Cigarette Lighter	195	\$1,197,127
Heat from direct flame, convection currents	160	\$3,118,521
Cigarette	141	\$766,924

### Cause of Ignition



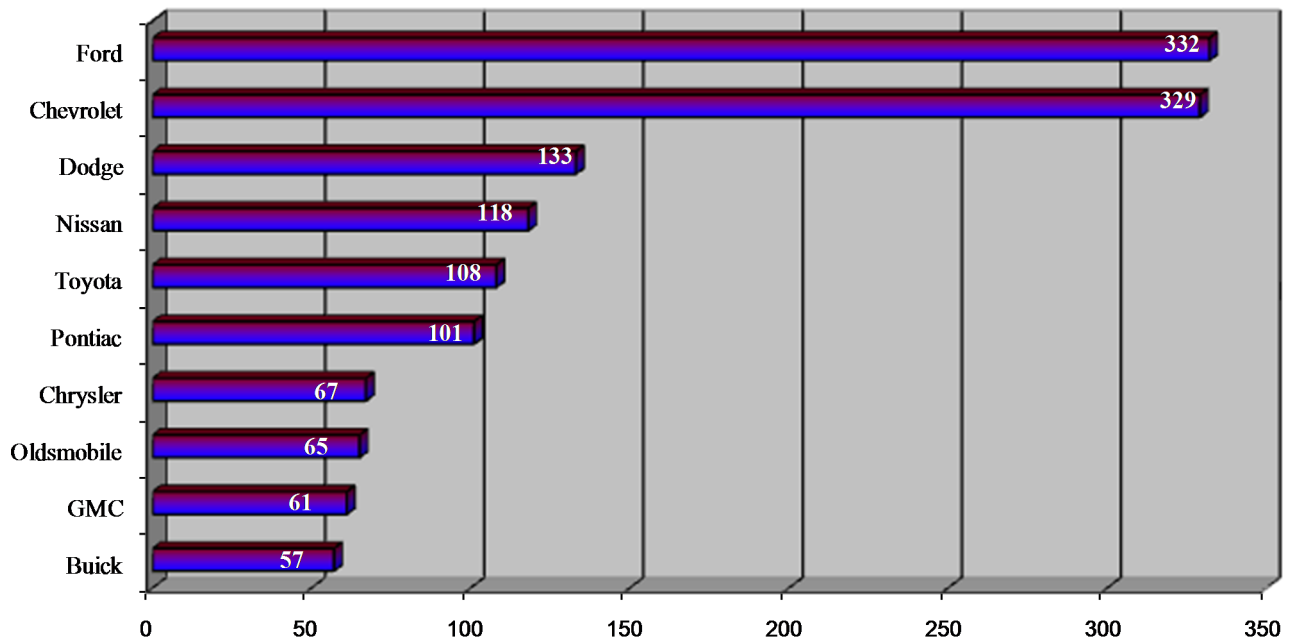
## 2009 Louisiana Fire Statistics

### Area of Fire Origin in Passenger Vehicles



*In 2009 there were a total of 1,840 reported passenger vehicle fires, 11% of all fires reported.*

### Passenger Vehicle Fires by Make



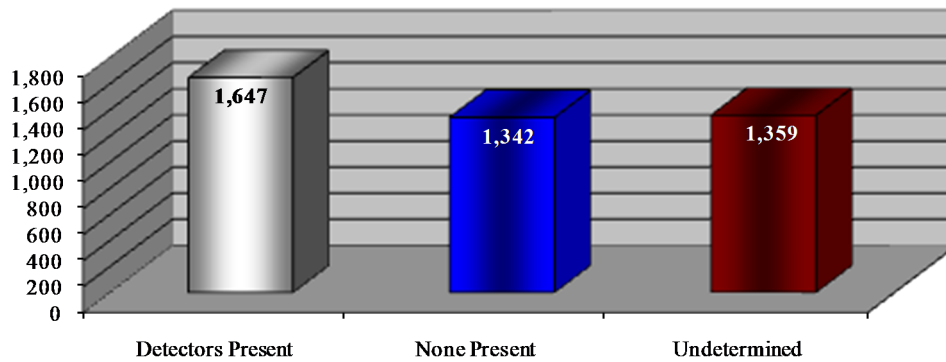
# 2009 Louisiana Fire Statistics

## Area of Fire Origin in Residential Properties



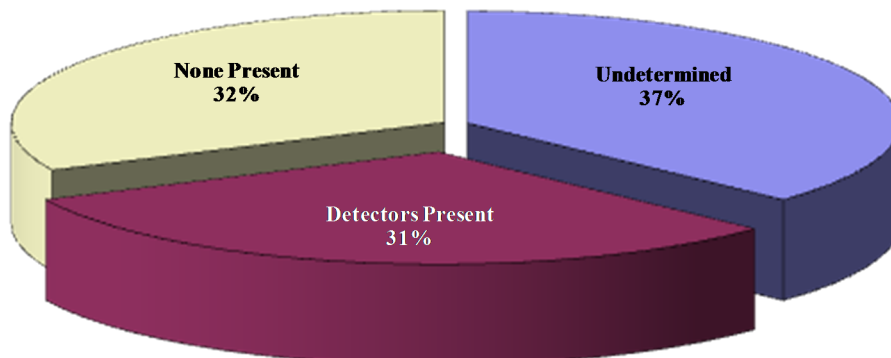
Percentages are tabulated against total number of reported fires in these prominent residential housing areas

### Smoke Detector Presence

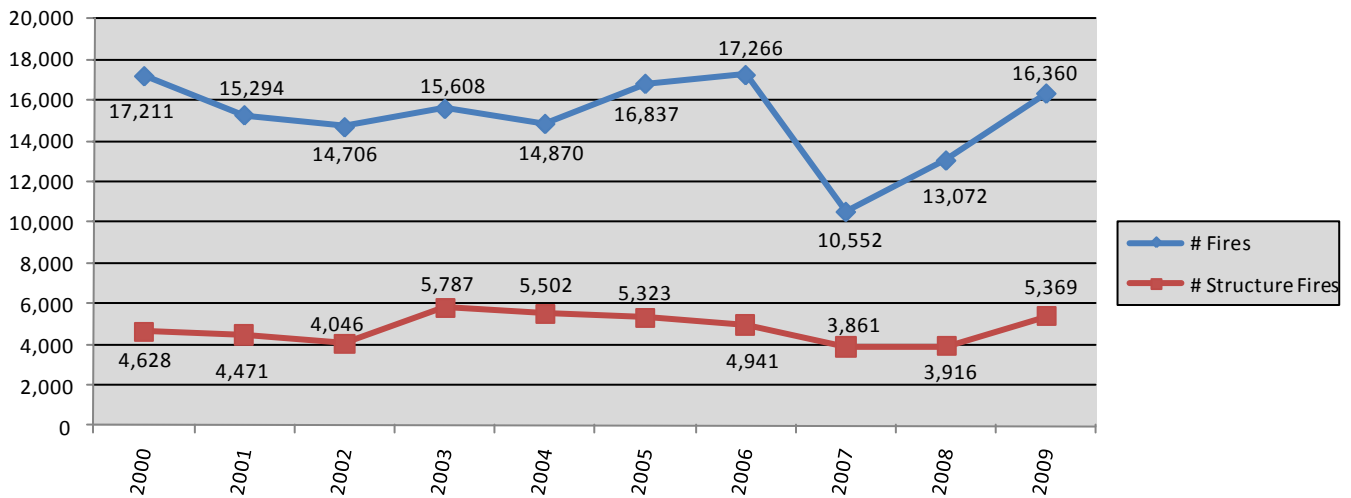


*Residential fires account for 78% of all structure fires and continue to be the most common and deadly type of fire, demonstrating the need and importance of home fire prevention and safety practices.*

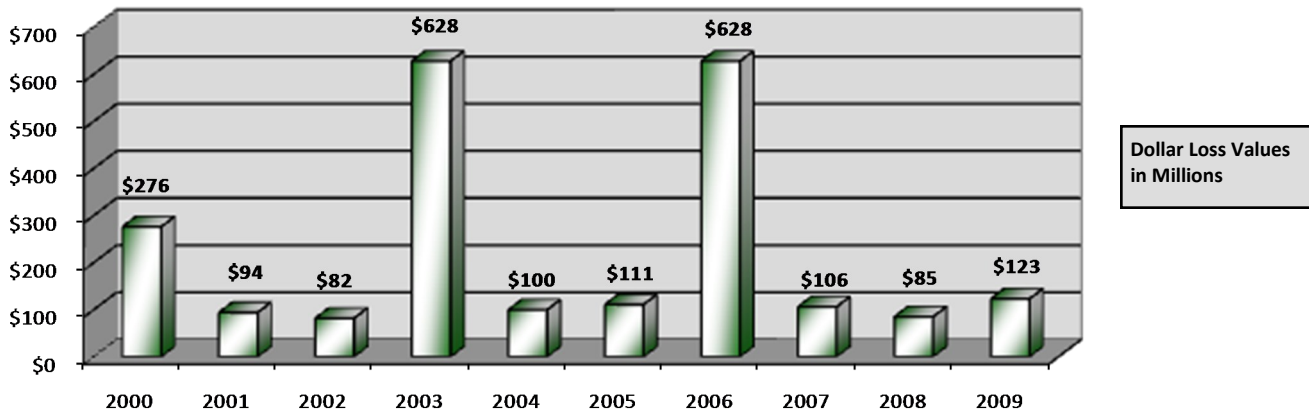
### Percent of Deaths & Injuries based on Smoke Detector Presence



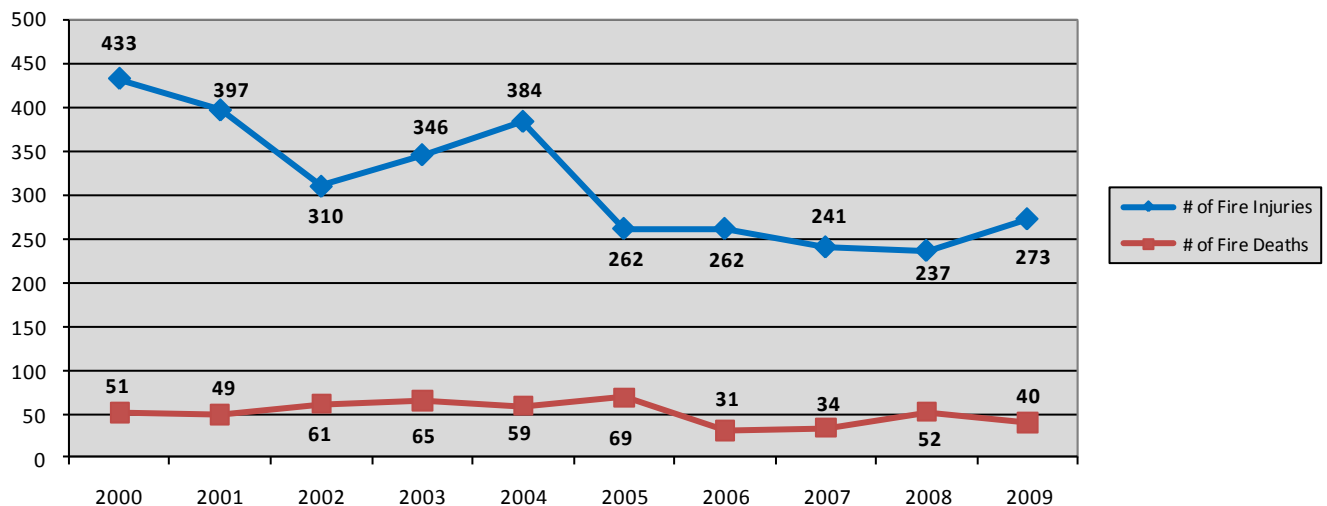
## Louisiana Fire Statistics 2000-2009



### Total Fire Dollar Loss



### Fire Deaths & Injuries



Counts include both non-fire service and fire service fire related injuries and deaths.



# Summary By Incident Type

Report Period: 1/1/09 - 12/31/09

Calls By Incident Type	Frequency	Percent Of Total Calls	Mutual Aid None	Mutual Aid Given	Mutual Aid Received	Other Aid Given	Invalid Aid Flag	Exposures	Total Incidents
<b>FIRES</b>									
Building Fires (110-118, 120-123).....	5369	2.69%	4488	1029	860	20	1	363	6761
Vehicle Fires (130-138).....	2685	1.49%	2685	167	136	24	0	113	3265
Others Fires (100, 140-173).....	7690	4.00%	7487	571	433	66	4	67	8628
<b>Total Fires.....</b>	<b>16360</b>	<b>8.19%</b>	<b>14800</b>	<b>1767</b>	<b>1429</b>	<b>110</b>	<b>21</b>	<b>543</b>	<b>18670</b>
Overpressure Ruptures, Explosion, Overheat (200-251).....	372	0.19%	354	11	16	2	0	3	386
<b>RESCUE CALLS</b>									
Emergency Medical Treatment (300-323).....	106033	53.39%	105232	1087	1066	324	11	0	107720
All Others (331-381).....	1582	0.79%	1501	134	88	12	1	0	1716
<b>Total Rescue Calls.....</b>	<b>108465</b>	<b>54.31%</b>	<b>106736</b>	<b>1221</b>	<b>1134</b>	<b>336</b>	<b>259</b>	<b>0</b>	<b>109686</b>
Hazardous Condition Calls (400-482).....	10073	5.04%	9733	240	286	42	12	0	10313
Service Calls (500-571).....	16090	8.06%	15793	543	167	87	43	1	16634
Good Intent Calls (600-671).....	28327	14.18%	27737	1329	506	84	0	0	29666
Severe Weather or Natural Disaster Calls (800-815).....	193	0.10%	183	12	10	0	0	0	205
Special Incident Calls (900-911).....	965	0.48%	947	11	13	5	0	0	976
Unknown Incident Type (UUU).....	0	0.00%	0	0	0	0	0	0	0
<b>FALSE CALLS</b>									
Malicious Calls (710-715, 751).....	716	0.36%	697	11	19	0	0	0	727
Other False Calls (700, 721-746).....	18136	9.08%	17553	526	558	25	0	0	18662
<b>Total False Calls.....</b>	<b>18863</b>	<b>9.45%</b>	<b>18251</b>	<b>537</b>	<b>577</b>	<b>25</b>	<b>10</b>	<b>0</b>	<b>19400</b>
<b>TOTAL CALLS.....</b>	<b>199708</b>	<b>99.83%</b>	<b>194534</b>	<b>5671</b>	<b>4138</b>	<b>681</b>	<b>345</b>	<b>547</b>	<b>205926</b>

Total Incidents With Exposure Fires.....	328	Total Fire Dollar Loss.....	\$122,582,381
Total Exposure Fires.....	547	Total Dollar Loss.....	\$124,475,439









Casualty Summary	Civilian	Fire Service
Fire Related Injuries	130	143
Non-Fire Injuries	280	106
Fire Related Deaths	39	1
Non-Fire Deaths	19	1

## *Louisiana Fire Incident Reporting System (LFIRS)*

This section of the State Fire Marshal's office is charged with the collection and analysis of the incident data submitted from participating fire departments in an effort to determine the impact of both man-made and natural disasters, especially fire, on the lives of our citizens and property in Louisiana. LFIRS (NFIRS) is the program through which this data is collected.

LFIRS (NFIRS) is **all incident reporting**. To show and tell the full value of the fire service, all alarms including EMS responses and public service calls should be documented in LFIRS. National statistics show that only a small percentage of all calls to which a fire department responds are fire-related. In Louisiana, for the year 2009, this percentage was just a little over 9%. Many departments continue to report only their fire calls, thus these departments, the communities they protect, and our state lose a vast amount of data as well as full recognition for the efforts of our fire service.

### **What can LFIRS do for Louisiana's Fire Departments?**

-  Summarize annual activities;
-  Determine needed improvements within the department (i.e., response times, training)
-  Assist with justification of budget requests and provide a basis for resource allocation;
-  Maintain eligibility for fire service grants through consistent LFIRS participation;
-  Answer questions about the nature and causes of injuries, death and property loss resulting from fires;
-  Identify fire trends and predict active "seasons" within your community;
-  Measure the success of fire prevention and safety programs;
-  Earn bonus points applied toward your PIAL rating with consistent participation in LFIRS.

We commend and encourage the continuing efforts of our fire departments to embrace electronic reporting. With the increasing demand for "real-time" information, electronic reporting provides for a more efficient means to collect incident data, respond to your report submissions, notify you of reporting errors, and offer more ready assistance in completing your reports.

The United States Fire Administration has launched a fully web-based version of the Federal Client Data Entry Tool (DET), the Data Entry Browser Interface (DEBI). This update will make incident reporting even more accessible as importing of the Federal Client Tool software to a computer is not required. Users of the DEBI enter their department's incident data via a secured link on the NFIRS website. Both the DET and the DEBI are available to offer free electronic incident reporting options to our fire departments. Access to either tool is granted through user accounts that are created and managed by the state program manager.

The LFIRS section of the State Fire Marshal website offers a wealth of information and help in regards to LFIRS reporting including monthly statistical summary reports. Please visit us at <https://lasfm.org>.

## *Louisiana Fire Incident Reporting System (LFIRS)*

The table below represents the information in the NFIRS database for Louisiana for 2009 and fire department information maintained in the asset tracking database.

Total Active Louisiana Fire Departments (In NFIRS database)	624
Total Active Fire Departments Reporting	268 (43%)
Total Active Fire Departments Not Reporting	356
Total Paid Firefighters (Approx.)	5276
Total Volunteer Firefighters (Approx.)	10,942

The figures above show an 18% increase in the number of “active” fire departments submitting LFIRS (NFIRS) data from 2008. We have also been able to identify 29 departments that have either merged with other departments, creating a single reporting unit, or are no longer in existence. Obtaining an accurate count of active departments is important to our state’s reporting statistics.

The following pages indicate which departments had incident data recorded in the NFIRS database and which departments did not have data recorded in the NFIRS database for the year 2009 as of July 7, 2010, 4:48 pm. For your convenience, the fire departments, along with their fire department identification number (FDID) are listed by parishes.

Incident reports are expected from each “active” fire department listed in the NFIRS database. If no reports are recorded under your department for the given time frame, your department will show as “Not Reporting”. Names are posted exactly as they appeared in the NFIRS database. All data files submitted to the [LFIRS.reporting@dps.la.gov](mailto:LFIRS.reporting@dps.la.gov) email were processed prior to the compiling of the data used in the incident statistics posted in pages 4-9 of this annual report.

Once again, we would like to thank all of those departments who submitted incident data and look forward to new relationships with those that want to further the life and property saving efforts of our fire service as well as start getting that much deserved credit for all they do!

The LFIRS State Program Manager is Cindy Gonthier. If you have questions or need assistance regarding LFIRS reporting, please contact Cindy at the State Fire Marshal’s office:

8181 Independence Blvd.  
 Baton Rouge, LA 70806  
 800-256-5452  
 225-925-1716  
[cindy.gonthier@dps.la.gov](mailto:cindy.gonthier@dps.la.gov)

## Fire Department Incident Reporting Roster

	REPORTING 2009		REPORTING 2009
<b>Acadia</b>		<b>Avoyelles</b>	
<b>01001 ACADIA-EVANGELINE FPD</b>	<b>YES</b>	<b>05001 BORDELONVILLE VFD</b>	<b>YES</b>
01005 BRANCH VFD	NO	05003 BROUILLETTE VFD	NO
<b>01010 EUNICE FD-ACADIA PARISH FD 4</b>	<b>YES</b>	<b>05005 BUNKIE FIRE DEPT</b>	<b>YES</b>
<b>01015 CHURCH POINT VFD</b>	<b>YES</b>	05010 COTTONPORT VFD	NO
<b>01020 CROWLEY FIRE DEPT</b>	<b>YES</b>	<b>05015 EFFIE VFD</b>	<b>YES</b>
<b>01024 EGAN VFD</b>	<b>YES</b>	05020 EVERGREEN VFD	NO
01025 ESTHERWOOD VFD	NO	05021 FIFTH WARD VFD	NO
01027 EVANGELINE VFD	NO	05023 GOUDEAU VFD	NO
01030 IOTA VFD	NO	<b>05025 HESSMER FIRE DEPT</b>	<b>YES</b>
01035 MERMENAU VFD	NO	<b>05030 MANSURA VFD</b>	<b>YES</b>
<b>01040 MIRE VFD-FIRE DIST 7</b>	<b>YES</b>	05035 MARKSVILLE VFD	NO
01045 VOL FIREMAN'S ASSOC OF MORSE	NO	05040 MOREAUVILLE VFD	NO
01050 RAYNE VFD	NO	05045 PLAUCHEVILLE VFD	NO
01055 RICHARD VFD	NO	05050 SIMMESPORT VFD	NO
01060 LYONS POINT VFD	NO	05055 DUPONT VFD	NO
<b>Allen</b>		<b>Beauregard</b>	
02001 ELIZABETH VFD	NO	<b>06001 BEAUREGARD FIRE DIST 2</b>	<b>YES</b>
<b>02005 ALLEN PARISH FIRE DIST 4</b>	<b>YES</b>	<b>06005 BEAUREGARD FIRE DIST 3</b>	<b>YES</b>
<b>02010 OAKDALE FIRE DEPT</b>	<b>YES</b>	<b>06010 DE RIDDER FIRE DEPT</b>	<b>YES</b>
<b>02015 ALLEN PARISH FIRE DIST 5</b>	<b>YES</b>	06018 BEAUREGARD FIRE DIST 1	NO
<b>02020 ALLEN PARISH WARD 3 DIST 2</b>	<b>YES</b>	<b>06035 BEAUREGARD FIRE DIST 4</b>	<b>YES</b>
02025 ALLEN PARISH FIRE DIST 3	NO		
02030 ALLEN PARISH FIRE DIST 6	NO	<b>Bienville</b>	
02035 COUSHATTA TRIBAL FIRE DEPT	NO	07001 ARCADIA FIRE DEPT.	No
		<b>07010 BIENVILLE FIRE DISTRICT 6</b>	<b>YES</b>
		07017 BIENVILLE WARD 7	No
<b>Ascension</b>		<b>07020 BIENVILLE WARDS 4 &amp; 5</b>	<b>YES</b>
<b>03001 DONALDSONVILLE FIRE DEPT</b>	<b>YES</b>	<b>07045 BIENVILLE WARDS 1, 2 &amp; 3</b>	<b>YES</b>
<b>03020 GONZALES VFD</b>	<b>YES</b>		
03021 GONZALES EMERGENCY MED SER	NO	<b>Bossier</b>	
03035 ASCENSION PARISH FIRE DIST 2	NO	<b>08005 BENTON VFD</b>	<b>YES</b>
<b>03045 ASCENSION PARISH FIRE DIST 3</b>	<b>YES</b>	<b>08010 BOSSIER CITY FIRE DEPT</b>	<b>YES</b>
<b>03060 SORRENTO VFD</b>	<b>YES</b>	<b>08020 HAUGHTON VFD</b>	<b>YES</b>
<b>03065 ASCENSION PARISH FIRE DIST 1</b>	<b>YES</b>	08025 PLAIN DEALING VFD	NO
		<b>08030 EAST CENTRAL BOSSIER DIST 1</b>	<b>YES</b>
<b>Assumption</b>		<b>08035 SOUTH BOSSIER FIRE DIST 2</b>	<b>YES</b>
04001 BAYOU L'OURSE VFD	NO	<b>08040 BOSSIER FIRE DIST 3</b>	<b>YES</b>
<b>04005 LABADIEVILLE VFD</b>	<b>YES</b>	<b>08045 NE BOSSIER FIRE DIST 5</b>	<b>YES</b>
<b>04010 NAPOLEONVILLE VFD</b>	<b>YES</b>	<b>08050 BOSSIER FIRE DIST 7</b>	<b>YES</b>
<b>04015 PAINCOURTVILLE VFD</b>	<b>YES</b>		
<b>04020 PIERRE PART F&amp;R</b>	<b>YES</b>		

## *Fire Department Incident Reporting Roster*

	REPORTING 2009		REPORTING 2009
<b>Caddo</b>		<b>Caldwell</b>	
09005 CADDO PARISH FIRE DIST 1	YES	11001 CALDWELL PARISH VFD	NO
09013 CADDO PARISH FIRE DIST 5	YES	11010 COLUMBIA VFD	NO
09020 CADDO PARISH FIRE DIST 3	YES	11020 CLARKS VFD	NO
09040 CADDO PARISH FIRE DIST 2	YES	11025 CALDWELL PARISH DIST 1	NO
09045 CADDO PARISH FIRE DIST 7	YES	11030 GRAYSON VFD	NO
09060 SHREVEPORT FIRE DEPT	YES	11035 HERBERT VFD	NO
09063 CADDO PARISH FIRE DIST 4	YES	11045 COLUMBIA HEIGHTS VFD	NO
09068 CADDO PARISH FIRE DIST 6	YES	11050 COREY VFD	NO
09070 CADDO FIRE DIST 8	YES	11055 COTTONPLANT VFD	NO
		11060 KELLY VFD	NO
		11065 SANDY BAYOU VFD	NO
<b>Calcasieu</b>		11070 WARD 5 VFD	NO
10001 CARLYSS FIRE DEPT	YES	11075 COLUMBIA EASTSIDE VFD	NO
10005 DE QUINCY VFD	NO		
10010 CALCASIEU WARD 6	NO		
10012 HOUSTON RIVER VFD	YES	<b>Cameron</b>	
10015 IOWA VFD	NO	12001 CAMERON FIRE DIST 1	YES
10020 LAKE CHARLES FIRE DEPT	YES	12003 JOHNSON BAYOU VFD	NO
10022 LE BLEU SETTLEMENT VFD	YES	12005 CREOLE FIRE DEPT	YES
10025 WARD 1 FPD 1	YES	12010 CAMERON FIRE DIST 9	NO
10029 STARKS VFD , WARD 5, FPD 1	YES	12012 GRAND LAKE/SWEET LAKE VFD	YES
10030 SULPHUR FIRE DEPT	YES	12015 HACKBERRY VFD	NO
10035 VINTON VFD	YES	12020 HOLLY BEACH VFD	NO
10040 CALCASIEU WARD 7 FIRE DIST 1	NO		
10045 WESTLAKE VFD	NO	<b>Catahoula</b>	
10050 CAL-CAM VFD	NO	13001 CLAYTON VFD	NO
10055 WARD SIX FPD 1	YES	13002 ENTERPRISE VFD	NO
10060 CALCASIEU WARD 2 FIRE DIST 1	NO	13005 HARRISONBURG VFD	NO
10065 CHENNAULT FIRE DEPT	NO	13010 CATAHOULA FPD 6	NO
		13015 JONESVILLE VFD	YES
		13020 SICILY ISLAND VFD	NO
		13025 SANDY LAKE VFD	NO
		13030 CATAHOULA WARD 9 FDIST 2	NO
		13035 MANIFEST VFD	NO
		13040 PARHAMS VFD	NO
		13045 SNAGGY LAKE VFD	NO
		13050 LARTO VFD	NO
		13055 MAITLAND VFD	NO

## Fire Department Incident Reporting Roster

	REPORTING 2009		REPORTING 2009		
<b>Claiborne</b>		<b>East Feliciana</b>			
14001	ATHENS VFD	NO	19001	CLINTON VFD	NO
<b>14005</b>	<b>HAYNESVILLE VFD</b>	<b>YES</b>	19002	ETHEL VFD	NO
14010	HOMER VFD	NO	19003	WOODLAND VFD	NO
14015	JUNCTION CITY VFD	NO	19005	EAST LA STATE HOSPITAL	NO
14020	CLAIBORNE FIRE DIST 6 VFD	NO	19015	JACKSON VFD	NO
14025	SUMMERFIELD VFD	NO	19020	NORWOOD VFD	NO
14030	CLAIBORNE FPD 5	NO	19023	PECAN GROVE VFD	NO
			<b>19025</b>	<b>SLAUGHTER FIRE DEPT</b>	<b>YES</b>
<b>Concordia</b>			19027	TOWN OF SLAUGHTER VFD	NO
15001	CLAYTON VFD	NO	19030	WILSON VFD	NO
<b>15005</b>	<b>FERRIDAY FIRE DEPT</b>	<b>YES</b>	19035	BLUFF CREEK VFD	NO
15010	MONTEREY FPD 1	NO	19037	MCMANUS VFD	NO
15015	JONESVILLE VFD	NO			
15020	RIDGECREST VFD	NO	<b>Evangeline</b>		
<b>15025</b>	<b>VIDALIA FIRE DEPT</b>	<b>YES</b>	<b>20001</b>	<b>ACADIA-EVANGELINE FPD</b>	<b>YES</b>
15030	CONCORDIA FIRE DIST 2	NO	<b>20003</b>	<b>EVANGELINE FIRE DIST 2</b>	<b>YES</b>
			20005	MAMOU FPD 1	NO
<b>DeSoto</b>			<b>20010</b>	<b>WARD 5 FPD</b>	<b>YES</b>
16001	DESOTO FIRE DIST 2	NO	<b>20015</b>	<b>VILLE PLATTE VFD</b>	<b>YES</b>
16003	DESOTO FIRE DIST 9	NO	<b>20020</b>	<b>WARD 4 FPD</b>	<b>YES</b>
16005	DESOTO FIRE DIST 1	NO	20025	FAUBOURG VFD	NO
<b>16010</b>	<b>MANSFIELD FIRE DEPT</b>	<b>YES</b>	20035	LONEPINE VFD	NO
16020	DESOTO FIRE DIST 3	NO			
16025	DESOTO FIRE DIST 5	NO	<b>Franklin</b>		
16030	DESOTO FIRE DIST 8	NO	21001	BASKIN VFD	NO
			21005	VILLAGE OF GILBERT VFD	NO
<b>East Baton Rouge</b>			<b>21010</b>	<b>WINNSBORO VFD</b>	<b>YES</b>
<b>17001</b>	<b>BAKER FIRE DEPT</b>	<b>YES</b>	21015	WISNER VFD	NO
<b>17005</b>	<b>BATON ROUGE FIRE DEPT</b>	<b>YES</b>	<b>21020</b>	<b>CROWVILLE VFD</b>	<b>YES</b>
<b>17010</b>	<b>BROWNSFIELD FPD 3</b>	<b>YES</b>	21025	FRANKLIN PARISH FIRE DIST 2	NO
<b>17015</b>	<b>CENTRAL FPD 4</b>	<b>YES</b>			
<b>17020</b>	<b>CHANEYVILLE VFD</b>	<b>YES</b>	<b>Grant</b>		
<b>17025</b>	<b>EAST SIDE VFD</b>	<b>YES</b>	22001	GRANT PARISH FIRE DIST 1	NO
<b>17030</b>	<b>EAST BATON ROUGE FPD 6</b>	<b>YES</b>	22003	GRANT PARISH FIRE DIST 4	NO
<b>17035</b>	<b>PRIDE VFD</b>	<b>YES</b>	<b>22005</b>	<b>GRANT PARISH FIRE DIST 3</b>	<b>YES</b>
<b>17040</b>	<b>ST GEORGE FPD</b>	<b>YES</b>	22010	GEORGETOWN VFD	NO
<b>17050</b>	<b>ZACHARY FIRE DEPT</b>	<b>YES</b>	22015	HUDSON CREEK VFD	NO
<b>17055</b>	<b>ALSEN-ST IRMA LEE VFD</b>	<b>YES</b>	22020	MONTGOMERY VFD	NO
17060	BR METRO AIRPORT ARF DIVISION	NO	<b>22025</b>	<b>GRANT PARISH FIRE DIST 5</b>	<b>YES</b>
			22030	TULLOS VFD	NO
<b>East Carroll</b>			22035	VERDA VFD	NO
18001	LAKE PROVIDENCE FIRE DEPT	NO			
18005	EAST CARROLL FIRE DEPT	NO			

## Fire Department Incident Reporting Roster

	REPORTING 2009		REPORTING 2009	
<b>Iberia</b>		<b>Jefferson</b>		
23001	IBERIA PARISH FIRE DIST 1	NO	26001 JEFFERSON E BANK CONS FD	NO
23010	DELCAMBRE VFD	NO	<b>26005 THIRD DIST VFD</b>	<b>YES</b>
23015	JEANERETTE VFD	NO	26010 LAFITTE-BARATARIA-CROWNPT VFD	NO
<b>23020</b>	<b>LOREAUVILLE VFD</b>	<b>YES</b>	26015 TERRYTOWN FIFTH DIST VFD	NO
<b>23030</b>	<b>NEW IBERIA FIRE DEPT</b>	<b>YES</b>	<b>26020 HARVEY VFD CO 2</b>	<b>YES</b>
23035	BELAIRE-OLIVER-MORBIHAN VFD	NO	26024 NORTHROP GRUMMAN-AVONDALE FD	NO
23040	COTEAU VFD	NO	<b>26025 AVONDALE VFC</b>	<b>YES</b>
23045	GRAND MARAIS VFD	NO	<b>26026 BRIDGE CITY VFC 1</b>	<b>YES</b>
23050	LYDIA VFD	NO	<b>26027 LIVE OAK MANOR VFD</b>	<b>YES</b>
23055	RYNELLA VFD	NO	26028 NINE MILE POINT VFC 1	NO
23060	ACADIANA REGIONAL AIRPORT F&R	NO	26029 HERBERT WALLACE VFD	NO
			<b>26045 MARRERO-ESTELLE VFD CO 1</b>	<b>YES</b>
			26046 MARRERO-HARVEY VFD	NO
			<b>26047 MARRERO-RAGUSA VFD</b>	<b>YES</b>
			<b>26060 GRAND ISLE VFC 1</b>	<b>YES</b>
			26066 DAVID CROCKETT FIRE CO	NO
			26075 HARAHAH VFD	NO
			<b>26080 KENNER FIRE DEPT</b>	<b>YES</b>
			<b>26085 WESTWEGO VFC 1</b>	<b>YES</b>
			26090 KENNER VFC, INC	NO
<b>Iberville</b>			<b>Jefferson Davis</b>	
24003	BAYOU BLUE VFD	NO	<b>27005 JEFFERSON DAVIS FIRE DIST 5</b>	<b>YES</b>
24005	BAYOU SORREL VFD	NO	<b>27007 JEFF DAVIS FIRE DIST 6</b>	<b>YES</b>
<b>24010</b>	<b>EAST IBERVILLE VFD</b>	<b>YES</b>	<b>27010 JENNINGS FIRE DEPT</b>	<b>YES</b>
24015	GROSSE TETE VFD	NO	27015 IOWA VFD	NO
24020	MARINGOUIN VFD	NO	27017 LACASSINE VFD	NO
<b>24025</b>	<b>PLAQUEMINE FIRE DEPT</b>	<b>YES</b>	27020 LAKE ARTHUR VFD	NO
24030	ROSEDALE VFD	NO	27025 ROANOKE VFD	NO
24035	WHITE CASTLE VFD	NO	27027 JEFFERSON DAVIS FIRE DIST 4	NO
24040	BAYOU GOULA F&R	NO	27030 WELSH VFD	NO
24050	BAYOU PIGEON VFD	NO	27035 WARD 9 FIRE DIST 7	NO
			27040 WOODLAWN VFD	NO
			27045 BAYOU CHENE FIRE DEPT	NO
			<b>27055 JEFFERSON DAVIS FIRE DIST 2</b>	<b>YES</b>
<b>Jackson</b>				
25001	WARD 3	NO		
<b>25010</b>	<b>HODGE CITY VFD</b>	<b>YES</b>		
<b>25015</b>	<b>JONESBORO FIRE DIST 1</b>	<b>YES</b>		
<b>25020</b>	<b>WARD 1</b>	<b>YES</b>		
<b>25025</b>	<b>WARD 4</b>	<b>YES</b>		
<b>25030</b>	<b>WARD 2</b>	<b>YES</b>		
25035	WARD 7	NO		

## Fire Department Incident Reporting Roster

	REPORTING 2009		REPORTING 2009
<b>Lafayette</b>		<b>Lincoln</b>	
<b>28001 BROUSSARD VFD</b>	<b>YES</b>	31001 CHOUDRANT VFD	NO
<b>28005 CARENCRO VFD</b>	<b>YES</b>	<b>31005 LINCOLN PARISH FIRE DIST</b>	<b>YES</b>
<b>28010 DUSON VFD</b>	<b>YES</b>	31010 GRAMBLING VFD	NO
28015 JUDICE VFD	NO	31015 RUSTON FIRE DEPT	NO
<b>28020 LAFAYETTE FIRE DEPT</b>	<b>YES</b>	31020 SIMSBORO VFD	NO
28025 LAFAYETTE REGIONAL AIRPORT	NO		
<b>28030 MILTON VFD</b>	<b>YES</b>	<b>Livingston</b>	
<b>28035 SCOTT VFD STATION 1</b>	<b>YES</b>	32001 ALBANY VFD , FIRE DIST 1	NO
28040 YOUNGSVILLE VFD	NO	32003 COLYELL VFD	NO
		<b>32005 DENHAM SPRINGS FIRE DEPT</b>	<b>YES</b>
		32010 LIVINGSTON PARISH FIRE DIST 9	NO
		32015 FRENCH SETTLEMENT VFD	NO
		<b>32020 LIVINGSTON FPD 4</b>	<b>YES</b>
		32025 LIVINGSTON VFD	NO
		32027 LIVINGSTON PARISH FIRE DIST 10	NO
		32030 SPRINGFIELD VFD	NO
		32035 SPRINGVILLE VFD	NO
		<b>32040 LIVINGSTON PARISH FIRE DIST 5</b>	<b>YES</b>
		32045 LIVINGSTON PARISH FIRE DIST 2	NO
		32047 LIVINGSTON PARISH FIRE DIST 11	NO
		<b>Madison</b>	
		33001 TALLULAH FIRE DEPT	NO
		33005 MOUND FIRE DIST 1	NO
		33010 DELTA VFD	NO
		33015 AFTON FPD	NO
		<b>33020 BEAR LAKE FPD 1</b>	<b>YES</b>
		<b>Morehouse</b>	
		34001 BASTROP FIRE DEPT	NO
		34005 BONITA VFD	NO
		34009 BEEKMAN VFD	NO
		34010 COLLINSTON VFD	NO
		34015 MER ROUGE VFD	NO
		34020 OAK RIDGE VFD	NO
		34025 10TH WARD FIRE DIST 1	NO
		34030 BEEKMAN VFD WARD 2	NO
<b>Lafourche</b>			
<b>29002 BAYOU BLUE VFD</b>	<b>YES</b>		
29015 BELLE-AMIE VFD	NO		
29016 CUT OFF VFD	NO		
29017 GALLIANO VFD	NO		
29018 GOLDEN MEADOW VFD	NO		
29019 LAROSE VFD	NO		
29021 UPPER LAROSE VFD	NO		
29022 PORT FOURCHON VFD	NO		
<b>29025 LAFOURCHE FIRE DIST 2</b>	<b>YES</b>		
29040 BAYOU BOEUF VFD	NO		
<b>29045 CHACKBAY VFD</b>	<b>YES</b>		
29047 CHOCTAW VFD	NO		
<b>29055 LAFOURCHE CROSSING 308 VFD</b>	<b>YES</b>		
<b>29060 ST JOHN VFD</b>	<b>YES</b>		
29063 VACHERIE-GHEENS VFD	NO		
<b>29065 THIBODAU VFD</b>	<b>YES</b>		
<b>29067 LAFOURCHE FIRE DIST 3</b>	<b>YES</b>		
<b>29070 LAFOURCHE FIRE DIST 1</b>	<b>YES</b>		
<b>LaSalle</b>			
<b>30001 JENA VFD</b>	<b>YES</b>		
30002 WHITEHEALL VFD	NO		
<b>30005 OLLA VFD</b>	<b>YES</b>		
<b>30010 TULLOS VFD</b>	<b>YES</b>		
<b>30015 URANIA VFD</b>	<b>YES</b>		
<b>30017 ROGERS-NEBO VFD</b>	<b>YES</b>		
30025 EDEN FELLOWSHIP VFD	NO		
<b>30030 SUMMERSVILLE/ROSEFIELD VFD</b>	<b>YES</b>		
30035 LITTLE CREEK VFD	NO		



## Fire Department Incident Reporting Roster

	REPORTING 2009		REPORTING 2009		
<b>Natchitoches</b>		<b>Pointe Coupee</b>			
35001	NATCHITOCHE FIRE DIST 8	NO	39001	FORDOCHE VFD	NO
35002	AJAX VFD	NO	39005	INNIS VFD	NO
<b>35005</b>	<b>NATCHITOCHE FIRE DIST 9</b>	<b>YES</b>	39010	LIVONIA VFD	NO
35010	NATCHITOCHE FIRE DIST 3	NO	39015	MORGANZA VFD	NO
<b>35015</b>	<b>NATCHITOCHE FIRE DIST 1</b>	<b>YES</b>	<b>39020</b>	<b>POINTE COUPEE FIRE DIST 5</b>	<b>YES</b>
35020	GOLDONNA FIRE DIST 2	NO	<b>39030</b>	<b>POINTE COUPEE FIRE DIST 3</b>	<b>YES</b>
<b>35030</b>	<b>NATCHITOCHE FIRE DEPT</b>	<b>YES</b>	39035	POINTE COUPEE DIST 4	NO
<b>35031</b>	<b>NATCHITOCHE FIRE DIST 6</b>	<b>YES</b>			
35035	PROVENCAL VFD	NO	<b>Rapides</b>		
<b>35040</b>	<b>NATCHITOCHE FIRE DIST 7</b>	<b>YES</b>	<b>40001</b>	<b>ALEXANDRIA FIRE DEPT</b>	<b>YES</b>
35041	MARTHAVILLE UNIT DIST 7 VFD	NO	<b>40005</b>	<b>ALPINE VFD</b>	<b>YES</b>
35045	SPANISH LAKE UNIT DIST 7 VFD	NO	40015	BALL VFD	NO
<b>35047</b>	<b>NATCHITOCHE FIRE DIST 5</b>	<b>YES</b>	<b>40020</b>	<b>BOYCE VFD</b>	<b>YES</b>
35048	BETHANY VFD	NO	40025	RAPIDES FIRE DIST 12	NO
35050	POWHATAN VFD	NO	<b>40030</b>	<b>COTILE GARDNER VFD</b>	<b>YES</b>
			<b>40033</b>	<b>DEVILLE VFD</b>	<b>YES</b>
<b>Orleans</b>			<b>40035</b>	<b>ENGLAND AIRPARK FIRE DEPT</b>	<b>YES</b>
<b>36001</b>	<b>NEW ORLEANS FIRE DEPT</b>	<b>YES</b>	40040	ESLER REGIONAL AP FD	NO
36005	NEW ORLEANS LAKE FRONT AP FD	NO	40045	FOREST HILL VFD	NO
36010	IRISH BAYOU VFD	NO	40050	GLENMORA VFD	NO
36020	FORT PIKE VFD	NO	<b>40055</b>	<b>HOLIDAY VILLAGE VFD</b>	<b>YES</b>
36025	NASA MAF	NO	40060	LECOMPTE VFD	NO
			<b>40065</b>	<b>PINEVILLE FIRE DEPT</b>	<b>YES</b>
<b>Ouachita</b>			<b>40070</b>	<b>RAPIDES PARISH FIRE DIST 2</b>	<b>YES</b>
<b>37005</b>	<b>MONROE FIRE DEPT</b>	<b>YES</b>	<b>40071</b>	<b>RUBY-KOLIN VFD</b>	<b>YES</b>
<b>37010</b>	<b>OUACHITA PARISH FIRE DEPT</b>	<b>YES</b>	40075	VA	NO
37015	STERLINGTON VFD	NO	<b>40080</b>	<b>WOODWORTH VFD</b>	<b>YES</b>
<b>37020</b>	<b>WEST MONROE FIRE DEPT</b>	<b>YES</b>	40081	ECHO-POLAND VFD	NO
			<b>40082</b>	<b>OAK HILL VFD</b>	<b>YES</b>
<b>Plaquemines</b>			40083	PLAINVIEW COMMUNITY VFD	NO
38001	POINTE-A-LA-HACHE VFD	NO	40085	FLATWOODS VFD	NO
38005	BELLE CHASSE VFD	NO	<b>40090</b>	<b>SPRING CREEK VFD</b>	<b>YES</b>
38010	PORT SULPHUR VFD	NO			
<b>38015</b>	<b>BURAS VFD</b>	<b>YES</b>	<b>Red River</b>		
<b>38020</b>	<b>BOOTHVILLE-VENICE VFD</b>	<b>YES</b>	41001	RED RIVER FIRE PROTECT DIST	NO
38025	LAKE HERMITAGE VFD	NO	41005	HALL SUMMIT VFD	NO
38030	CALLENDER NAS FIRE DEPT	NO	41010	MARTIN VFD	NO
38035	WOODLAWN VFD	NO			

## Fire Department Incident Reporting Roster

	REPORTING 2009		REPORTING 2009
<b>Richland</b>		<b>St. James</b>	
42001 DELHI VFD	NO	47001 GRAMERCY VFD	NO
42005 MANGHAM VFD	NO	<b>47005 LUTCHER VFD</b>	<b>YES</b>
<b>42010 RAYVILLE VFD</b>	<b>YES</b>	47010 PAULINE, GRAND POINT & BELMONT	NO
42015 ARCHIBALD-ALTO FIRE DIST	NO	47015 UNION CONVENT VFD	NO
<b>42020 START-GIRARD FPD</b>	<b>YES</b>	<b>47020 VACHERIE VFD 1</b>	<b>YES</b>
42025 HOLLY RIDGE FIRE DIST	NO	47025 SOUTH VACHERIE VFD	NO
42030 WARD 1 FIRE DIST	NO		
<b>42035 RICHLAND DIST 8</b>	<b>YES</b>	<b>St. John the Baptist</b>	
		<b>48001 GARYVILLE VFD</b>	<b>YES</b>
		<b>48005 LA PLACE VFD</b>	<b>YES</b>
		<b>48010 RESERVE VFD</b>	<b>YES</b>
		<b>48015 ST JOHN WESTSIDE VFD</b>	<b>YES</b>
<b>Sabine</b>		<b>St. Landry</b>	
43005 SABINE FIRE DIST 1 WARDS 1&2	NO	49001 ARNAUDVILLE VFD	NO
43025 NORTH SABINE VFD	NO	49005 CANKTON VFD	NO
43043 SABINE FIRE DIST 1 WARDS 3&4	NO	<b>49010 EUNICE FIRE DEPT</b>	<b>YES</b>
		49015 GRAND COTEAU VFD	NO
		49025 LEONVILLE VFD	NO
		49030 MELVILLE VFD	NO
		<b>49035 CITY OF OPELOUSAS FIRE DEPT</b>	<b>YES</b>
		49040 PALMETTO VFD	NO
		<b>49042 PRAIRIE VFD</b>	<b>YES</b>
		49043 MORROW VFD	NO
		49045 ST LANDRY FIRE DIST 1	NO
		<b>49050 ST LANDRY FIRE DIST 2</b>	<b>YES</b>
		49054 GRAND PRAIRIE VFD	NO
		<b>49055 ST LANDRY FIRE DIST 3</b>	<b>YES</b>
		49056 SHUTESTON LEWISBURG VFD	NO
		49057 LAWTELL VFD	NO
		49058 WASHINGTON VFD	NO
		49059 WHITEVILLE VFD	NO
		49060 SUNSET VFD	NO
		49065 PORT BARRE VFD	NO
		<b>49070 ST LANDRY FIRE DIST 6</b>	<b>YES</b>
<b>St. Bernard</b>			
<b>44001 ST BERNARD PARISH FIRE DEPT</b>	<b>YES</b>		
<b>St. Charles</b>			
45003 BAYOU GAUCHE VFD	NO		
<b>45004 DES ALLEMAND VFD</b>	<b>YES</b>		
<b>45005 EAST ST CHARLES VFD</b>	<b>YES</b>		
<b>45010 HAHNVILLE VFD</b>	<b>YES</b>		
<b>45015 LULING VFD</b>	<b>YES</b>		
<b>45020 NORCO AREA VFD</b>	<b>YES</b>		
<b>45025 PARADIS VFD</b>	<b>YES</b>		
<b>45030 ST ROSE VFD</b>	<b>YES</b>		
45040 KILLONA VFD	NO		
<b>St. Helena</b>			
46001 GREENSBURG VFD	NO		
46005 HILLSDALE VFD	NO		
46010 MONTPELIER VFD	NO		
46013 ST HELENA FIRE DIST 2	NO		
46015 PINE GROVE VFD	NO		
46020 KENTWOOD VFD	NO		
<b>46025 NORTH HELENA VFD</b>	<b>YES</b>		
<b>46030 ST HELENA DIST 4</b>	<b>YES</b>		
46035 SOUTH SIDE SECOND WARD FPD	NO		
46040 ST HELENA PARISH 6TH WARD VFD	NO		

## Fire Department Incident Reporting Roster

	REPORTING 2009		REPORTING 2009
<b>St. Martin</b>		<b>St. Tammany</b>	
<b>50001 ARNAUDVILLE VFD</b>	<b>YES</b>	<b>52001 ST TAMMANY FIRE DIST 1</b>	<b>YES</b>
50003 DEQUINCY FIRE	NO	<b>52005 ST TAMMANY FIRE DIST 2</b>	<b>YES</b>
<b>50005 BREAUX BRIDGE VFD</b>	<b>YES</b>	<b>52010 ST TAMMANY FIRE DIST 3</b>	<b>YES</b>
<b>50010 BUTTE LAROSE VFD</b>	<b>YES</b>	<b>52015 ST TAMMANY FIRE DIST 4</b>	<b>YES</b>
<b>50015 CADE VFD</b>	<b>YES</b>	52020 ST TAMMANY FIRE DIST 5	NO
<b>50020 BELLE RIVER VFD</b>	<b>YES</b>	<b>52025 ST TAMMANY FIRE DIST 6</b>	<b>YES</b>
<b>50025 CATAHOULA VFD</b>	<b>YES</b>	<b>52030 ST TAMMANY FIRE DIST 7</b>	<b>YES</b>
<b>50030 CECILIA VFD</b>	<b>YES</b>	<b>52035 ST TAMMANY FIRE DIST 8</b>	<b>YES</b>
<b>50035 COTEAU HOLMES VFD</b>	<b>YES</b>	<b>52040 ST TAMMANY FIRE DIST 9</b>	<b>YES</b>
<b>50040 EVANGELINE VFD</b>	<b>YES</b>	52045 ST TAMMANY FIRE DIST 10	NO
<b>50045 HENDERSON VFD</b>	<b>YES</b>	<b>52050 ST TAMMANY FIRE DIST 11</b>	<b>YES</b>
<b>50050 PARKS VFD</b>	<b>YES</b>	<b>52055 COVINGTON FIRE DEPT</b>	<b>YES</b>
<b>50055 STEPHENSVILLE VFD</b>	<b>YES</b>	52060 KINGSPOINT VFC 1	NO
		52065 NORTH SHORE VFD	NO
		<b>52070 ST TAMMANY FIRE DIST 12</b>	<b>YES</b>
		52075 ST TAMMANY FIRE DIST 13	NO
<b>St. Mary</b>		<b>Tangipahoa</b>	
<b>51001 AMELIA VFD</b>	<b>YES</b>	53001 EIGHTH WARD FIRE DEPT	NO
51005 BALDWIN VFD	NO	53002 EASTERN HEIGHTS VFD	NO
51015 BAYOU VISTA VFD	NO	<b>53005 HAMMOND FIRE DEPT</b>	<b>YES</b>
51016 JEANERETTE VFD	NO	53010 HUSSER VFD	NO
<b>51020 BERWICK VFD</b>	<b>YES</b>	<b>53015 INDEPENDENCE VFD</b>	<b>YES</b>
51025 CENTERVILLE VFD	NO	53020 KENTWOOD VFD	NO
51026 CYPREMONTE POINT VFD	NO	<b>53025 LORANGER VFD</b>	<b>YES</b>
51027 FOUR CORNERS VFD	NO	53030 MANCHAC VFD	NO
<b>51030 FRANKLIN FIRE DEPT</b>	<b>YES</b>	<b>53035 NATALBANY VFD</b>	<b>YES</b>
51035 MORGAN CITY FIRE DEPT	NO	<b>53040 PONCHATOULA VFD</b>	<b>YES</b>
<b>51040 PATTERSON VFD</b>	<b>YES</b>	53045 ROSELAND VFD	NO
<b>51045 CHARENTON-CHITIMACHA VFD</b>	<b>YES</b>	<b>53050 TANGIPAHOA FD 1, WARDS 3,4&amp;5</b>	<b>YES</b>
		<b>53055 WILMER VFD</b>	<b>YES</b>
		<b>Tensas</b>	
		54001 NEWELLTON VFD	NO
		54005 ST JOSEPH VFD	NO
		54010 WATERPROOF VFD	NO
		<b>54015 TENSAS FIRE DIST 1</b>	<b>YES</b>

## *Fire Department Incident Reporting Roster*

	REPORTING 2009		REPORTING 2009
<b>Terrebonne</b>		<b>Vermillion</b>	
<b>55001 BAYOU CANE VFD</b>	<b>YES</b>	<b>57001 ABBEVILLE FIRE DEPT</b>	<b>YES</b>
<b>55002 COTEAU VFD</b>	<b>YES</b>	57003 ABBEVILLE BUMPER ZONE VFD	NO
55003 SCHRIEVER VFD	NO	<b>57005 ERATH VFD</b>	<b>YES</b>
55004 VILLAGE EAST VFD	NO	57006 VERMILLION DIST 13 VFD	NO
55010 COTTONPORT	NO	57010 DELCAMBRE VFD	NO
55025 GRAND CAILLOU VFD	NO	<b>57020 GUEYDAN VFD</b>	<b>YES</b>
<b>55030 BOURG VFD</b>	<b>YES</b>	<b>57025 HENRY VFD</b>	<b>YES</b>
55035 DIST 6 MONTEGUT/POINTE AUCHIEN	NO	<b>57030 INDIAN BAYOU VFD</b>	<b>YES</b>
<b>55040 LITTLE CAILLOU VFD</b>	<b>YES</b>	<b>57035 KAPLAN FIRE DEPT</b>	<b>YES</b>
<b>55046 GIBSON VF&amp;R</b>	<b>YES</b>	57036 KLONDIKE VFD	NO
55060 BAYOU BLACK VFD	NO	57037 LITTLE CHAPEL VFD	NO
55065 BAYOU DULARGE VFD	NO	57040 MAURICE VFD	NO
<b>55070 HOUMA FIRE DEPT</b>	<b>YES</b>	<b>57045 PECAN ISLAND VFD</b>	<b>YES</b>
<b>55075 BAYOU BLUE VFD</b>	<b>YES</b>	<b>57050 SEVENTH WARD VFD</b>	<b>YES</b>
		57055 LELEUX VFD	NO
		57060 MEAUX/NUNEZ VFD	NO
		57065 LEBLANC VFD	NO
<b>Union</b>		<b>Vernon</b>	
<b>56001 BERNICE VFD</b>	<b>YES</b>	58001 ANACOCO VFD	NO
<b>56005 FARMERVILLE VFD</b>	<b>YES</b>	58002 DRY FORK VFD 22	NO
56015 JUNCTION CITY VFD	NO	58005 HORNBECK VFD	NO
56020 LILLIE VFD	NO	<b>58010 LEESVILLE FIRE DEPT</b>	<b>YES</b>
<b>56025 MARION VFD</b>	<b>YES</b>	58015 NEW LLANO FIRE DEPT	NO
<b>56027 ROCKY BRANCH CROSSROADS VFD</b>	<b>YES</b>	58017 PITKIN VFD	NO
56030 SPEARVILLE VFD	NO	58020 ROSEPINE VFD	NO
56035 WARD 5 FIRE DIST	NO	<b>58025 SIMPSON VFD</b>	<b>YES</b>
<b>56040 SPENCER/W STERLINGTON FPD</b>	<b>YES</b>	<b>58035 SLAGLE VFD</b>	<b>YES</b>
<b>56045 NORTHEAST UNION FIRE DIST</b>	<b>YES</b>	<b>58040 LACAMP VFD STATION 15</b>	<b>YES</b>
		58045 SANDY CREEK VFD	NO
		58050 SAVAGE FORKS VFA STA 6	NO
		58055 EVANS VFD	NO
		<b>58060 SANDY HILL VFD</b>	<b>YES</b>
		58065 BURR FERRY VFD	NO
		58070 KNIGHT VFD	NO
		58071 MARLOW VFD	NO
		58075 CANEY VFD STA 17	NO
		58080 COMMUNITY VFD	NO
		<b>58085 CRAVENS VFD</b>	<b>YES</b>
		58090 ALCO/HUTTON VFD	NO
		58095 HICKS VFD	NO
		<b>58100 SUNDOWN VFD</b>	<b>YES</b>

## Fire Department Incident Reporting Roster

	REPORTING 2009		REPORTING 2009		
<b>Washington</b>		<b>West Carroll</b>			
59001	WASHINGTON FIRE DIST 5	NO	62001	WARD 1 FPD	NO
<b>59005</b>	<b>BOGALUSA FIRE DEPT</b>	<b>YES</b>	62005	OAK GROVE VFD	NO
59007	WASHINGTON FIRE DIST 1	NO	62010	WARD 2 VFD	NO
<b>59009</b>	<b>WASHINGTON FIRE DIST 7</b>	<b>YES</b>	<b>62015</b>	<b>GOODWILL VFD</b>	<b>YES</b>
<b>59010</b>	<b>SIXTH WARD VFD DIST 8</b>	<b>YES</b>	<b>62020</b>	<b>FOREST FIRE DIST</b>	<b>YES</b>
<b>59015</b>	<b>FRANKLINTON VFD</b>	<b>YES</b>	62025	FISKE UNION VFD	NO
59017	MT HERMON VFD	NO	62030	CONCORD VFD	NO
<b>59020</b>	<b>WASHINGTON FIRE DIST 4</b>	<b>YES</b>	62035	KILBOURNE FPD	NO
59025	WASHINGTON FIRE DIST 6	NO			
59035	WASHINGTON FIRE DIST 2	NO	<b>West Feliciana</b>		
<b>59037</b>	<b>WASHINGTON FIRE DIST 3</b>	<b>YES</b>	63001	ANGOLA VFD	NO
59101	SIXTH WARD VFD	NO	63005	ST FRANCISVILLE VFD	NO
			<b>63010</b>	<b>FIRE DIST 1 OF WEST FELICIANA</b>	<b>YES</b>
<b>Webster</b>			<b>Winn</b>		
60001	COTTON VALLEY VFD	NO	64001	DODSON VFD	NO
60005	CULLEN VFD	NO	<b>64005</b>	<b>WINNFIED FIRE DEPT</b>	<b>YES</b>
60010	DIXIE INN VFD	NO	64010	SIKES VFD	NO
60015	DOYLINE VFD	NO	64020	MONTGOMERY VFD	NO
60016	EVERGREEN VFD	NO	64025	VILLAGE OF CALVIN FIRE DEPT	NO
<b>60020</b>	<b>HEFLIN VFD</b>	<b>YES</b>	<b>64030</b>	<b>WINN PARISH FIRE DIST 3</b>	<b>YES</b>
<b>60025</b>	<b>MINDEN FIRE DEPT</b>	<b>YES</b>			
60027	SAREPTA FIRE DIST 5	NO			
60035	SHONGALOO FIRE DIST 9	NO			
<b>60040</b>	<b>SIBLEY VFD</b>	<b>YES</b>			
<b>60045</b>	<b>SPRINGHILL FIRE DIST 11</b>	<b>YES</b>			
60050	DUBBERLY VFD	NO			
60055	WEBSTER FIRE DIST 3	NO			
<b>60060</b>	<b>WEBSTER PARISH FIRE DIST 10</b>	<b>YES</b>			
<b>West Baton Rouge</b>					
61001	ADDIS VFD	NO			
<b>61005</b>	<b>BRUSLY VFD</b>	<b>YES</b>			
61010	ERWINVILLE VFD	NO			
61015	LOBDELL VFD	NO			
61020	PORT ALLEN FIRE DEPT	NO			
61025	ROSEHILL VFD	NO			

# The Spirit of Louisiana



On May 13, 2010, in a very moving and emotional dedication ceremony firefighters from across the state joined together with state and local elected officials to officially dedicate this very special fire truck back to the citizens of Louisiana.

Originally a gift from the citizens of Louisiana to the city of New York and the New York Fire Department following tragic losses during the events of September 11, 2001, New York responded in kind, in 2005 in the aftermath of Hurricane Katrina bringing the "Spirit of Louisiana" back to the origins of her inception.

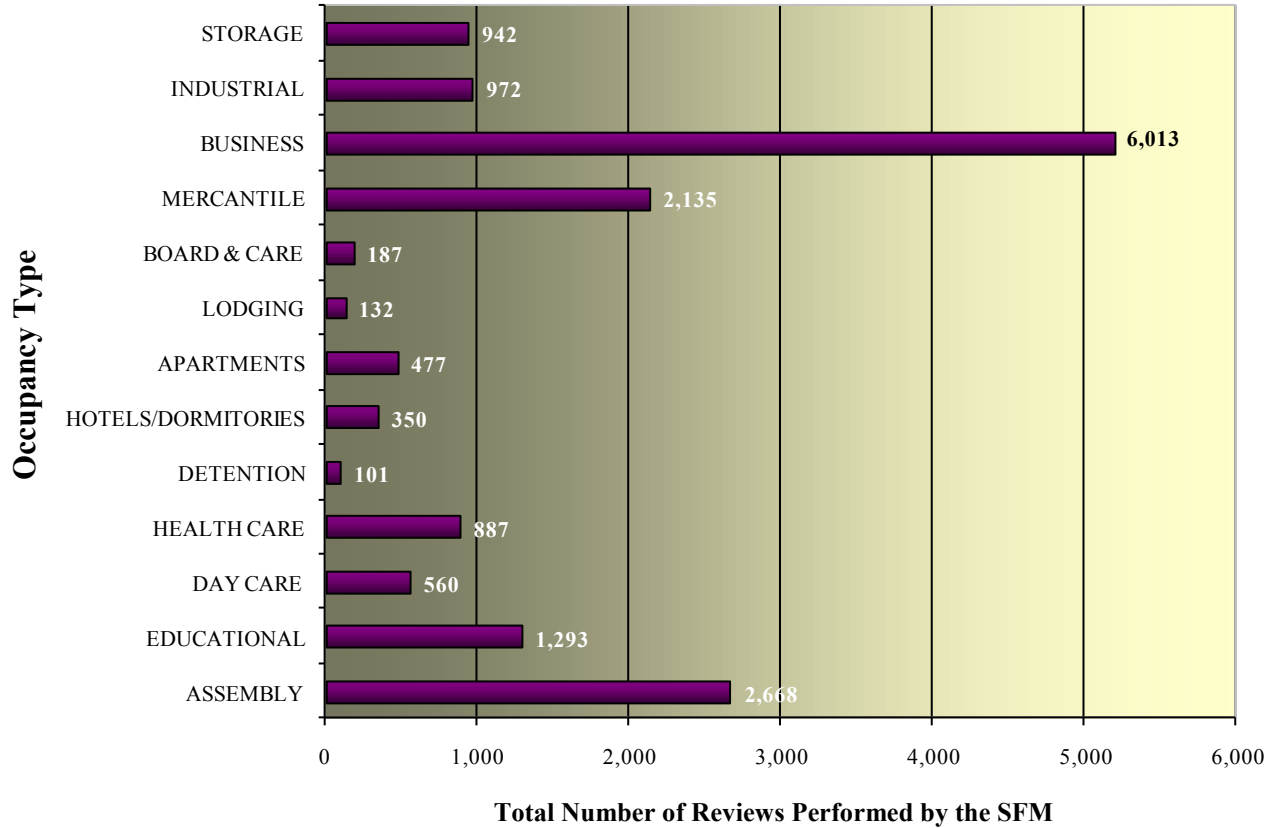
The "Spirit of Louisiana", now used throughout the state for parades, firefighter funerals, fire prevention, and fire and life safety education, will always be one of Louisiana's proudest moments in history and will remain a symbol of our state's greatest asset, the generosity and compassion its people!



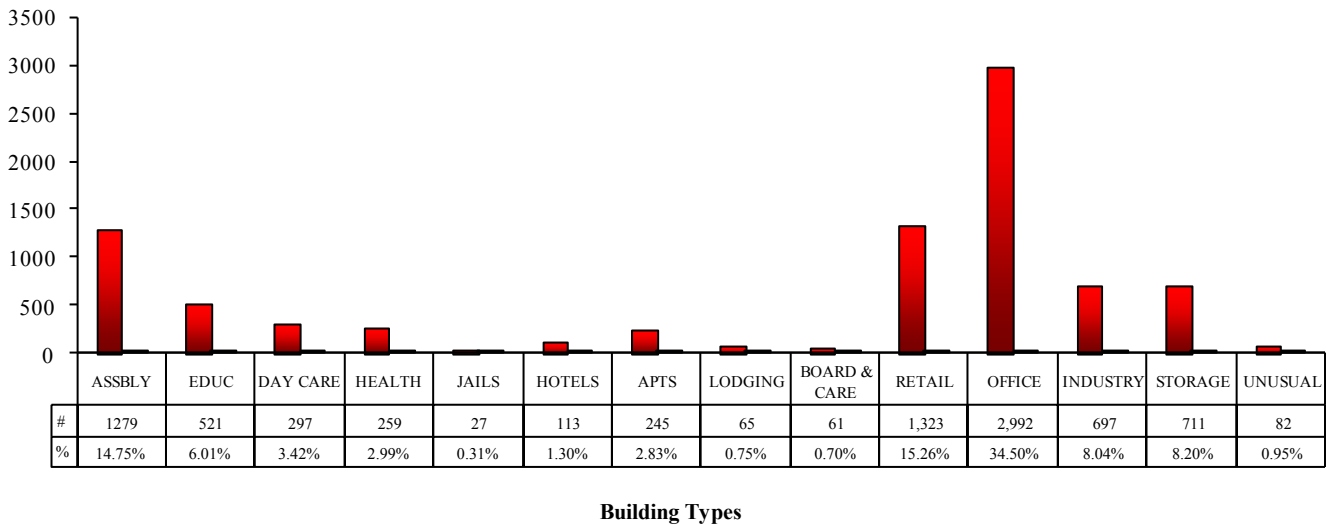
# **Fire Marshal's Office Section Reports**

# Plan Review Section

**Calendar Year -2009 SFM Plan Review Statistics**



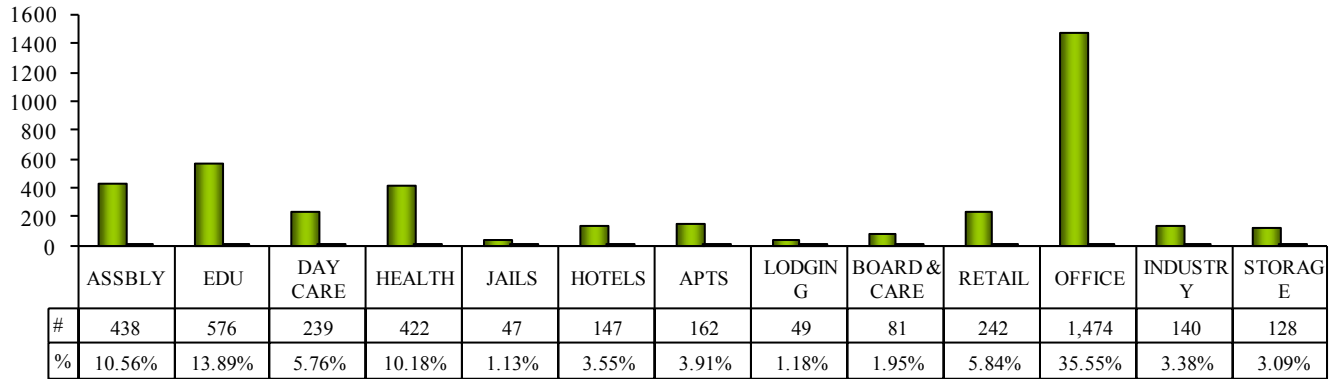
**Architectural/Tank Reviews  
8,672 Projects**





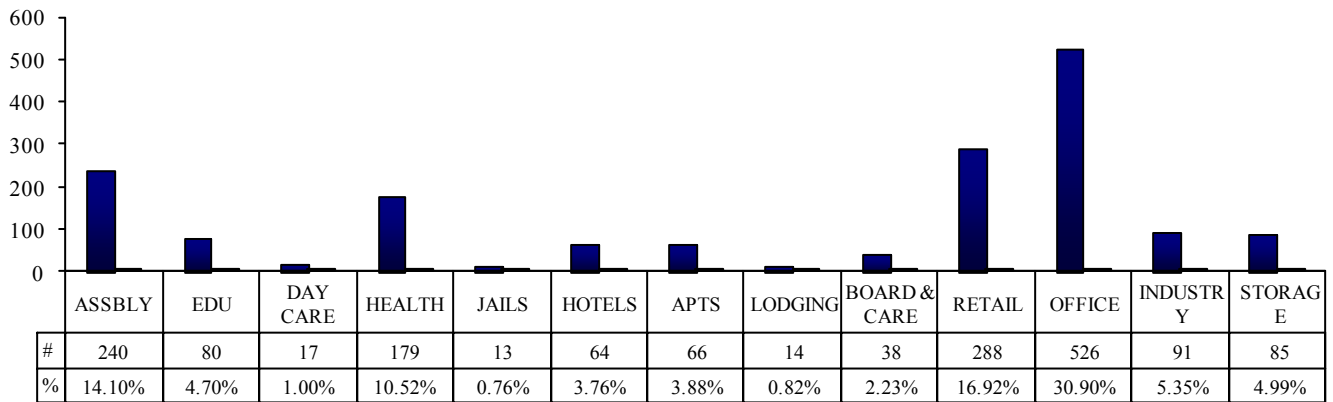
## Plan Review Section

### Fire Alarm Reviews 4,146 Total Projects



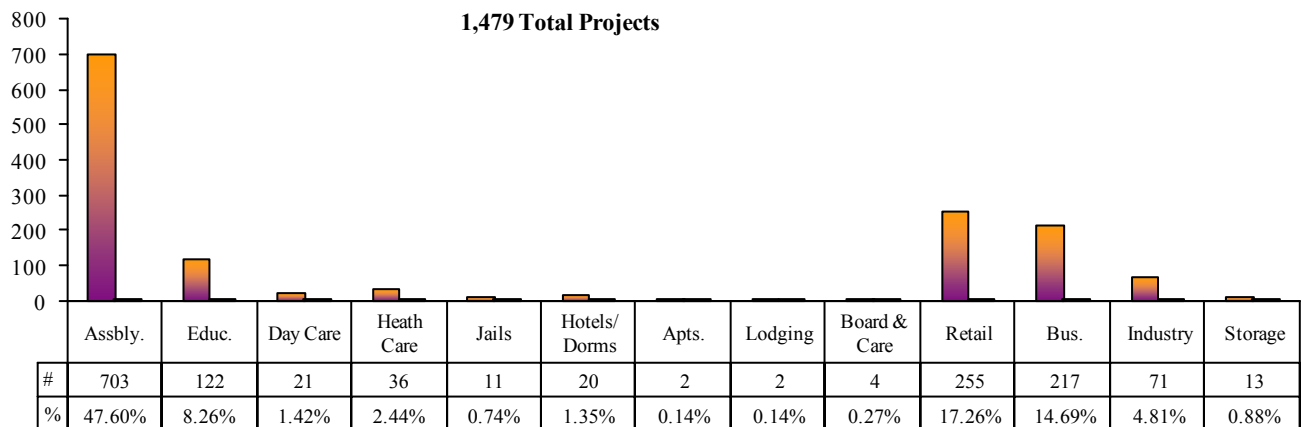
Building Types

### Sprinkler System Reviews 1,702 Total Projects



Building Types

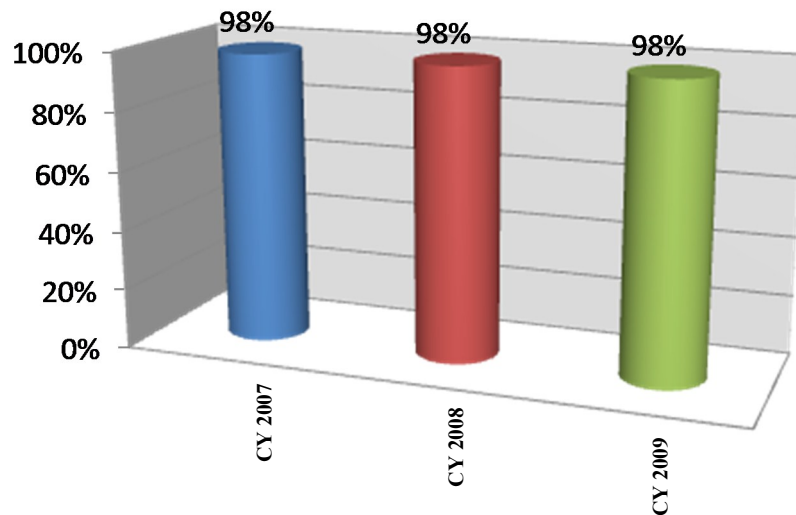
### Hood Suppression Reviews 1,479 Total Projects



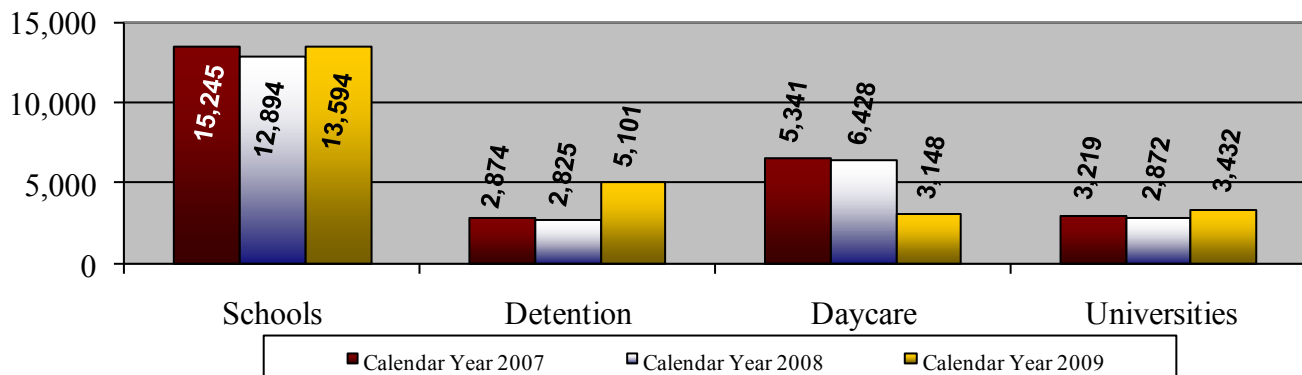
Building Types

## *Inspections Section*

The Inspections Section (Fire and Safety) is responsible for conducting life safety code inspections of all buildings except one and two family residences and Health Care facilities.



### Total Inspections 2007-2009

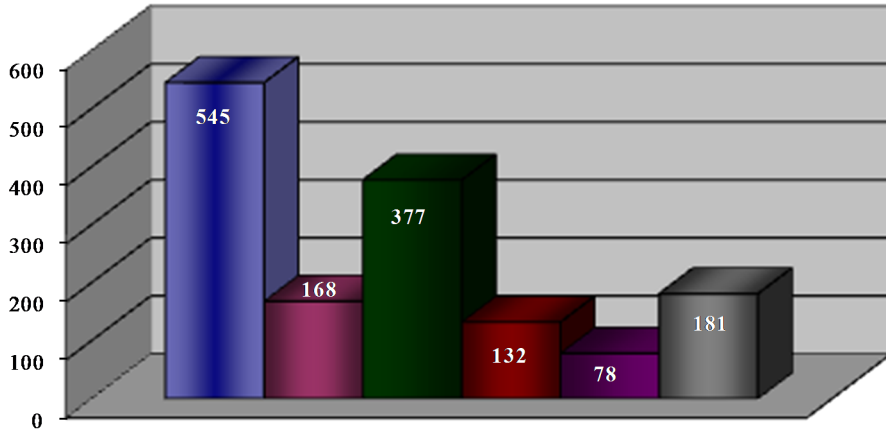


Effective July 1, 2010, inspections of new construction are conducted utilizing the 2009 Edition of NFPA 101 Life Safety Code and referenced NFPA standards. In addition, other codes and standards used are the Americans with Disabilities Act Accessibility Guidelines (ADAAG) and the State Fire Marshal Manual. Inspections of existing buildings are conducted utilizing the edition of the Life Safety Code that was adopted by the state at the time that the building was constructed. For example, if a building was constructed in 1970, the inspection would be conducted in accordance with the requirements as set forth in the 1967 Life Safety Code.

In order to provide efficient service to the public and allow facilities to open in a timely manner, the State Fire Marshal's Office maintained its goal of completing final inspections within two weeks of the inspection request. The first diagram above indicates the percentage of final inspections conducted in accordance with this goal. The second diagram indicates the total number of inspections for specific occupancy types.

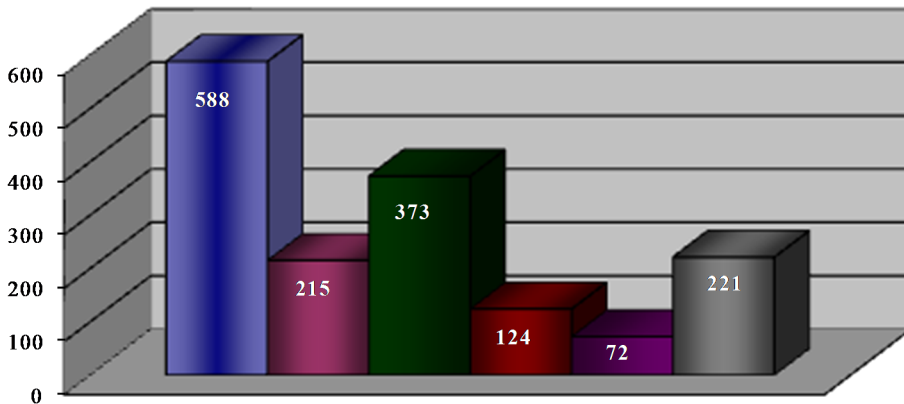
## *Investigation / Arson Section*

**Arson Statistics - Calendar Year 2007**



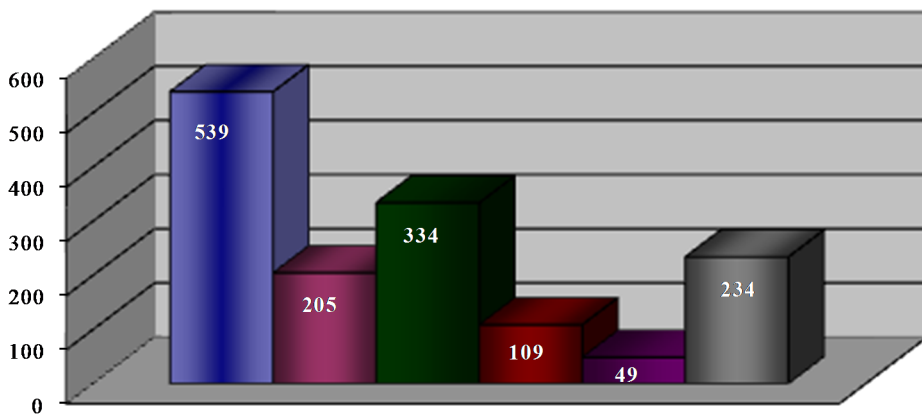
- Total Fires Investigated
- Total Non-Incendiary Fires
- Total Suspicious/Incendiary Fires
- Total Cases Closed by Arrest/Exceptional Clearance
- Total Fatalities
- Total Burn Injuries Reported

**Arson Statistics - Calendar Year 2008**



- Total Fires Investigated
- Total Non-Incendiary Fires
- Total Suspicious/Incendiary Fires
- Total Cases Closed by Arrest/Exceptional Clearance
- Total Fatalities
- Total Burn Injuries Reported

**Arson Statistics - Calendar Year 2009**



- Total Fires Investigated
- Total Non-Incendiary Fires
- Total Suspicious/Incendiary Fires
- Total Cases Closed by Arrest/Exceptional Clearance
- Total Fatalities
- Total Burn Injuries Reported

# Licensing Section

The Licensing Section regulates the following Life Safety & Property Protection Industries:

**Life Safety**

- ⇒ Fire Sprinkler
- ⇒ Fire Suppression
- ⇒ Kitchen Hood Suppression
- ⇒ Fire Alarm
- ⇒ Fire Extinguishers

**Property Protection**

- ⇒ Locksmith
- ⇒ Security
- ⇒ CCTV
- ⇒ Access Control

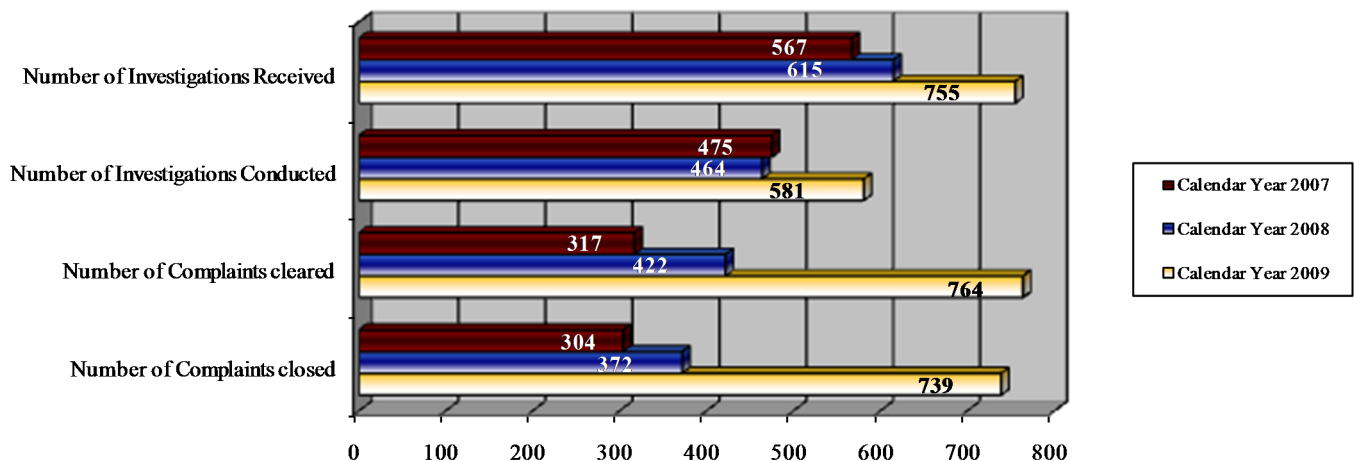
**Licensing Applications Processed**

	2007	2008	2009
Firm	1,100	1,380	1,672
Employee	6,985	7,929	9,010

**Number of Complaints (by type)**

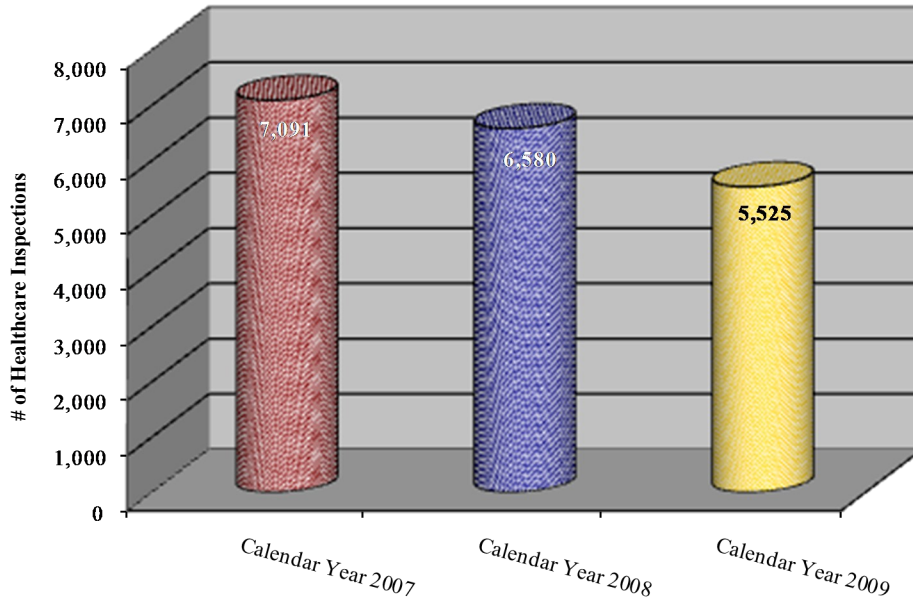
	2007	2008	2009
Security	92	132	188
Fire Alarm	127	145	196
Fire Extinguisher	55	66	94
Fire Suppression	8	11	9
Kitchen Hood Suppression	32	38	42
Sprinkler	100	108	63
Locksmith	65	45	92
CCTV	70	49	65
Access Control	18	21	6

**Summary of Licensing Investigations Section**



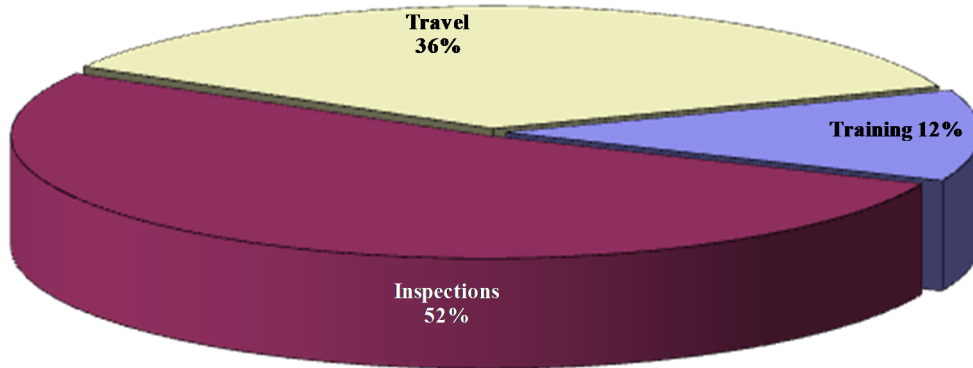
# Health Care Section

**Health Care Inspections**



*The Health Care Section performs inspections of hospitals, nursing homes, and ICF/MR Facilities statewide.*

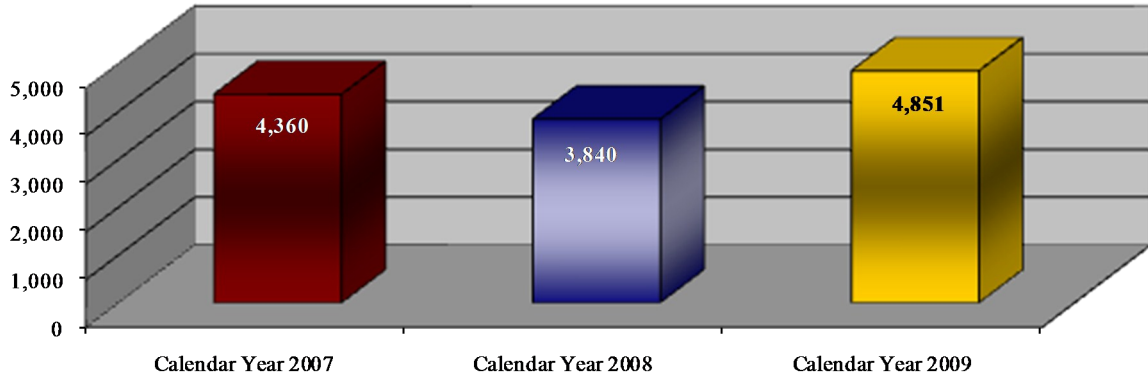
**Healthcare Hour Percentage - 2009**



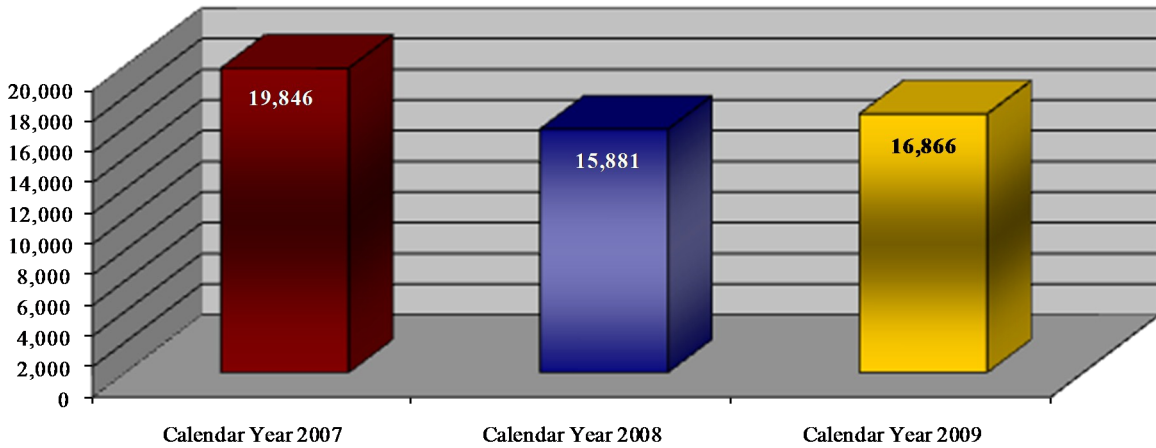
Month	InspectionCount	FY to Date
Jan - Mar 2009	1,800	1,800
Apr - Jun 2009	1,403	3,203
Jul - Sep 2009	1,336	4,539
Oct - Dec 2009	986	5,525

# Mechanical Safety Section

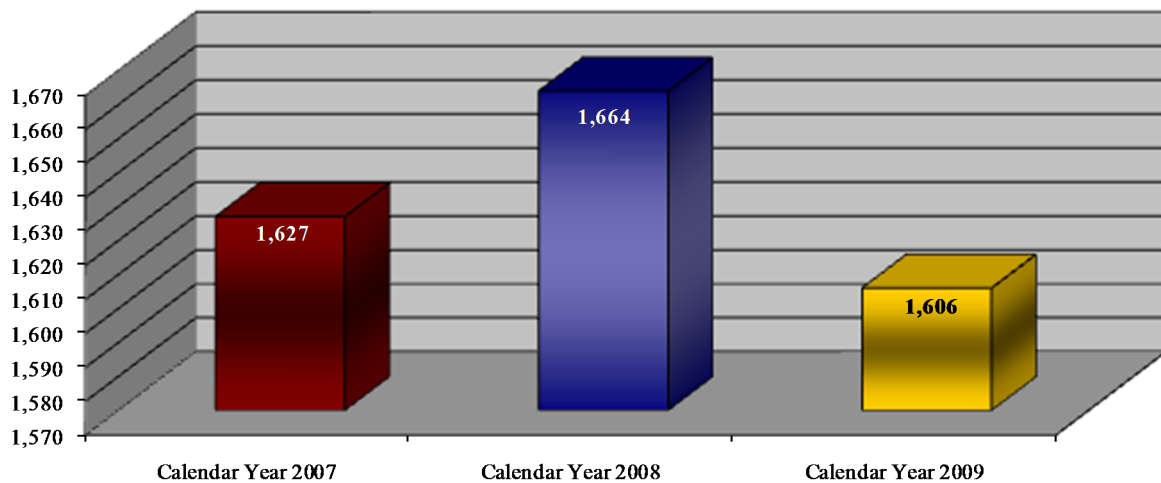
## Amusement Inspections



## Boiler Inspections



## Fireworks Inspections



## Fire Education

It is the mission of the Louisiana State Fire Marshal's office to prevent and reduce the incidents of fire by increasing the awareness and knowledge of the citizens of our great state regarding fire prevention, fire education and life safety. We provide fire prevention and public fire education services through public fire and safety educational programs and regular life safety inspections of businesses and places of assembly. We provide fire investigative services to determine the origin and cause of fires and enforce fire and life safety codes through plan reviews for new construction, remodeling, and occupancy changes in commercial buildings.

Public Fire Education is extremely important to the Louisiana State Fire Marshal's Office because through fire and safety education we prevent fires, tragedies, and save lives. We take Public Education very seriously and feel that it is just as important for an adult as it is for a child. Our Public Fire Education team is very involved with the businesses in the community, with the schools, and other community groups.



## Emergency Services

The Fire Marshal's office has consolidated its broad spectrum of emergency service activities into one cooperative effort to improve and enhance disaster preparedness initiatives, emergency response operations and long term disaster planning and recovery. This program directly and indirectly affects the estimated 4,523,628 citizens of the state of Louisiana that are exposed to natural disasters or acts of terrorism. This program encompasses the following services:



**Regional ESU (Emergency Services Unit)** – A 40-man multi-hazard team trained in command, communications, and medical, and rescue, created to support local fire departments and state agencies in times of crisis, both natural and man-made.

**Asset/Resource Inventory** – As a function of Emergency Support Function (ESF)-4, we are tasked to coordinate and mobilize fire and emergency services resources, personnel and equipment; and coordinate other state resources to support local governments and other states to detect and suppress urban, rural, wild land emergencies. Our objective is to lead a collaborative effort within the Fire Service to assist and facilitate the acquisition, data storage and management of Resources and Assets that may be available in the event of a disaster or major catastrophe.

**ESF-4 Disaster Preparedness Training Program** – State Fire Marshal initiative to educate fire departments and first responders to better prepare them in the event of natural or man-made disasters.

**LA Task Force Statewide USAR:** The Office of the State Fire Marshal in a collaborative endeavor with local and regional fire service partners established this task force to provide highly specialized technical rescue services to local jurisdictions and our neighboring states that are overwhelmed by natural and man-made disasters. Our communities are susceptible to many different natural and technical hazards that may result in the damage or collapse of structures within the state.



## Louisiana's "Fallen Firefighters Memorial"

*Honoring those who've paid the ultimate price while protecting the citizens of Louisiana*

The State Fire Marshal's Office in conjunction with the Walk of Honor Foundation, Louisiana Fire Chiefs Association, Louisiana State Firemen's Association, Professional Firefighters Association of Louisiana, Louisiana State University Fire & Emergency Training Institute team up to make this annual event a success.

This year's ceremony was held on Saturday, March 6, 2010. The following heroes were honored:

A Shepherd Pfister  
Jefferson Parish Fire Department  
March 4, 2008

Frankie Nelson  
Shreveport Fire Department  
May 10, 2009

Tommy Lee Adams  
Shreveport Fire Department  
December 12, 2009

Cordell B. Buggage  
New Orleans Fire Department  
February 25, 2009

Joseph Grace  
St. Tammany Fire District 4  
July 12, 2009

Jason Simon  
Lafayette Fire Department  
December 20, 2009

Alan Hermel  
Bossier Parish Fire District 1  
March 3, 2009

Richard Christiana  
David Crockett Fire Department  
September 11, 2009



May their names forever remain on our lips and in our hearts.



The 2011 ceremony is scheduled for Saturday, April 16 at 10:30 in the morning.

If you would like to donate to or purchase a brick in support of the memorial or participate in the 2011 event, please contact **Boyd Petty or Nathan McCallum at: (800) 256-5452.**



## The Louisiana State Fire Marshal Honor Guard

Established in 2004 the Honor Guard represents the office at special events and fire service funerals. The unit has honored many fire fighters by attending and coordinating individual funerals and the annual Louisiana Fallen Firefighter Memorial ceremony.

As tradition holds, the fire service has always had a strong Scottish/Irish influence. The unit has upheld this tradition by having kilted members who play the bagpipes and drums at events. The honor guard unit is made up of volunteers from the office and community. Besides traditional honor guard events, the unit is utilized to support the office's fire education program by distributing fire education material and teaching fire safety at parades and festivals.







We are on the web at:  
<http://lasfm.org>

#### Fire Marshal Phone Numbers:

Administration:	(225) 925-4911
	(225) 925-4593 (Fax)
Plan Review:	(225) 925-4920
	(225) 925-4414 (Fax)
Inspections:	(225) 925-4119
	(225) 925-3813 (Fax)
Investigations:	(225) 925-4205
	(225) 925-3813 (Fax)
Health Care:	(225) 925-4270
	(225) 925-3699 (Fax)
Mechanical:	(225) 925-4297
	(225) 925-3699 (Fax)
Licensing:	(225) 925-7047
	(225) 925-3699 (Fax)
LFIRS	(225) 922-1716
	(225) 925-4593 (Fax)
Volunteer FF Insurance	(225) 925-4933
Emergency Services	(225) 925-7264
Toll Free:	(800) 256-5452

## *Fire Fighter Benefits*

For additional information on the following benefits, please visit the State Fire Marshal website, <http://lasfm.org>.

1. **To All Volunteer Firefighters** - Group medical benefits available to you through the State Fire Marshal's Volunteer Firemen's Insurance Program through Harford Insurance.
2. **To All Volunteer Firefighters** – Effective November 1, 2009, Worker's Compensation Insurance Coverage for Louisiana's Active Volunteer Firefighters with LWCC.
3. **Scholarship for children of firefighters killed or disabled in performance of duty** - Paid and volunteer for fees, tuition or other charity including room and board as long as child meets the academic requirements and maintains a "C" average. In addition such children shall be entitled to a cash grant of \$240 per semester as an allowance for books etc. (LA RS.17:1682)
4. **\$50,000 accidental death** resulting in course of performance of official duties payment by State Risk Manager out to the self insurance fund credited in (LA RS.39:1533).
5. **Public Safety Officers and Firefighter death benefits** - Act USC 3796 et. seq. was enacted in 1976, as of 10/1/00 PSO-B's benefit increased to \$267,494.00.
6. **Louisiana State Firemen's Association** - \$15,000 accidental death benefit for fatality in the line of duty

